

Rosefield Solar Farm

Consultation Report

Appendices D-1 to D-4

EN010158/APP/5.2
September 2025
Rosefield Energyfarm Limited

APFP Regulation 5(2)(q)
Planning Act 2008
Infrastructure Planning
(Applications: Prescribed Forms
and Procedure) Regulations 2009

Table of Contents

Appendix D-1 – Final SoCC

Appendix D-1.1 – Final SoCC as published on 04 September 2024

Appendix D-1.2 – Amended title page published on 10 October 2024 and
screenshot showing update to Rosefield Solar Farm website

Appendix D-2 – Section 47 notice

**Appendix D-3 – Screenshot of Rosefield Solar Farm with availability of
the SoCC**

Appendix D-4 – Compliance with the SoCC

Appendix D-1 – Final SoCC



Table of Contents

Appendix D-1 – Final SoCC

Appendix D-1.1 – Final SoCC as published on 04 September 2024

Appendix D-1.2 – Amended title page published on 10 October 2024 and
screenshot showing update to Rosefield Solar Farm website

Appendix D-1.1- Final SoCC as published on 04 September 2024



Rosefield Solar Farm

Draft Statement of Community Consultation Phase Two Consultation

4 September 2024



Table of Contents

Table of Contents	1
1. Introduction	2
1.1. Rosefield Solar Farm	2
1.2. Environmental Impact Assessment	4
1.3. More information	4
2. Rosefield Solar Farm	6
2.1. About our proposals	6
2.2. How solar farms work	8
2.3. About the developers	9
3. Consulting the community	10
3.1. Developing our approach to consultation	10
3.2. Our approach to statutory consultation	12
3.3. Timing	13
3.4. What will we consult on?	13
3.5. Who will we consult?	13
3.6. How will we consult?	17
4. Consultation arrangements	24
4.1. How to find out more	24
4.2. Responding to the consultation	24
4.3. How we will consider the responses	25
4.4. Further information	25

1. Introduction

1.1. Rosefield Solar Farm

- 1.1.1. Climate change is a challenge we must all play our part in addressing – from the small changes we need to make in our everyday lives to the transformational changes we need to make across our whole economy, including how we power our homes, businesses and transport systems.
- 1.1.2. Over the next decade, the fossil fuels that once powered our economy need to be replaced with sources of low-carbon electricity. Solar is an important part of the way we can meet this challenge – it is reliable and can be built quickly. This is particularly important as the UK focuses on boosting its domestic supply of clean energy.¹
- 1.1.3. Rosefield Solar Farm ('Rosefield') is a proposed new solar farm with battery storage located in Buckinghamshire. Backed by EDF Renewables and PS Renewables, Rosefield would make an important contribution to our future energy network by producing enough clean, secure electricity to power more than 57,000 homes every year.²
- 1.1.4. Rosefield is classed as a Nationally Significant Infrastructure Project ('NSIP') because it would have a generating capacity above 50 megawatts ('MW'). This means we need to apply for a type of planning consent called a Development Consent Order (DCO) to build and operate it.
- 1.1.5. Unlike planning applications which are determined by local planning authorities, NSIP applications are submitted to and determined by the relevant Secretary of State, in this case, the Secretary of State for Energy Security and Net Zero.
- 1.1.6. Applying for a DCO is a fixed legal process, which is illustrated in Figure 1. A key part of this process is the requirement for consultation with the local community and other stakeholders, including statutory consultees, before the DCO application is submitted. This is known as a 'statutory consultation'. The statutory consultation will be the second phase of consultation on our proposals for Rosefield.
- 1.1.7. We³ completed our first phase of consultation (called a 'non-statutory consultation') between 28 September and 10 November 2023 on our early

¹ Department of Energy Security and Net Zero, [Powering Up Britain: Energy Security Plan](#), 2023.

² Based upon the average domestic electricity consumption per home (temperature corrected) per the Energy Consumption in the UK (published September 2021, Table C9 of ECUK: Consumption data tables)

³ Rosefield Energyfarm Limited (company No. 11618221), whose registered office is at Alexander House 1 Mandarin Road, Rainton Bridge Business Park, Houghton Le Spring, Sunderland, England, DH4 5RA (referred to in this document as Rosefield).

plans for Rosefield. This was to introduce our early proposals and gain feedback on them while they were still being developed.

- 1.1.8. The feedback we received from the community during our first phase of consultation, as well as the environmental surveys and technical work carried out since, has helped us to develop our proposals to the extent that we are now ready to carry out our statutory consultation, also referred to as our phase two consultation.
- 1.1.9. The feedback we receive during our phase two consultation will help us refine our proposals for Rosefield before we submit our DCO application.
- 1.1.10. Before we carry out the phase two consultation, we must publish a statement of how we will consult with the local community – known as a Statement of Community Consultation ('SoCC'). This SoCC has been prepared and publicised in accordance with Section 47 of the Planning Act 2008, Regulation 12 of the Infrastructure Planning (Environmental Impact Assessment) Regulations 2017 and relevant guidance from the Planning Inspectorate (Planning Act 2008: Pre-application stage for Nationally Significant Infrastructure Projects 2024).
- 1.1.11. It also reflects the feedback we have received from the host local authority for Rosefield – Buckinghamshire Council – which we have consulted in the preparation of this document.
- 1.1.12. As part of our DCO application, we will submit a Consultation Report detailing how we consulted, the feedback that we received during statutory consultation and how we have had regard to it. When considering our DCO application, the Secretary of State must consider whether the consultation that we have undertaken has been adequate.
- 1.1.13. This SoCC sets out how we will consult with the local community. It includes:
 - A brief summary of the Rosefield proposal
 - When consultation will be carried out
 - Who will be consulted
 - Where people can find out more about Rosefield
 - How we will consult (including on Preliminary Environmental Information)
 - How feedback will be collected and used to inform our proposals.

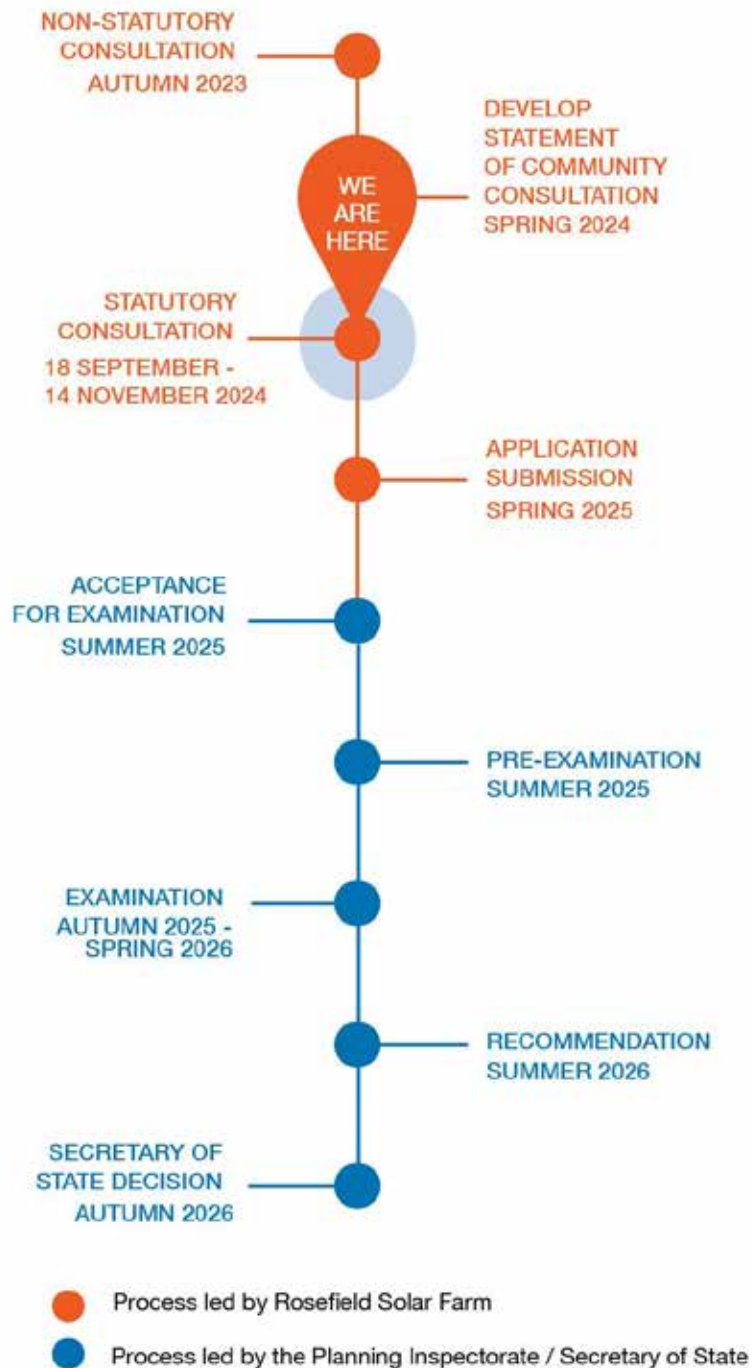
1.2. Environmental Impact Assessment

- 1.2.1. Rosefield is classed as an Environmental Impact Assessment ('EIA') development requiring an assessment of its likely significant effects on the environment under The Infrastructure Planning (Environmental Impact Assessment) Regulations 2017. Where appropriate, we will also describe measures that are proposed to avoid, reduce, or mitigate any significant adverse effects. We will report on this process in a document called an Environmental Statement ('ES') when we submit our DCO application.
- 1.2.2. At the statutory consultation, we will be sharing the preliminary results of our ongoing environmental assessments as well as information on mitigation measures that we may need to introduce to avoid, prevent, reduce or, if possible, offset any likely significant adverse effects. We will do so in a Preliminary Environmental Information Report ('PEIR') document.

1.3. More information

- 1.3.1. You can find more information about the Planning Act 2008, the Planning Inspectorate and its role, as well as how to participate in the DCO process on the Planning Inspectorate's National Infrastructure Planning website <https://national-infrastructure-consenting.planninginspectorate.gov.uk/>, or by calling the Planning Inspectorate on 0303 444 5000.

Figure 1: Planning process for NSIPs and indicative timescales for Rosefield



These dates are indicative and subject to change.

2. Rosefield Solar Farm

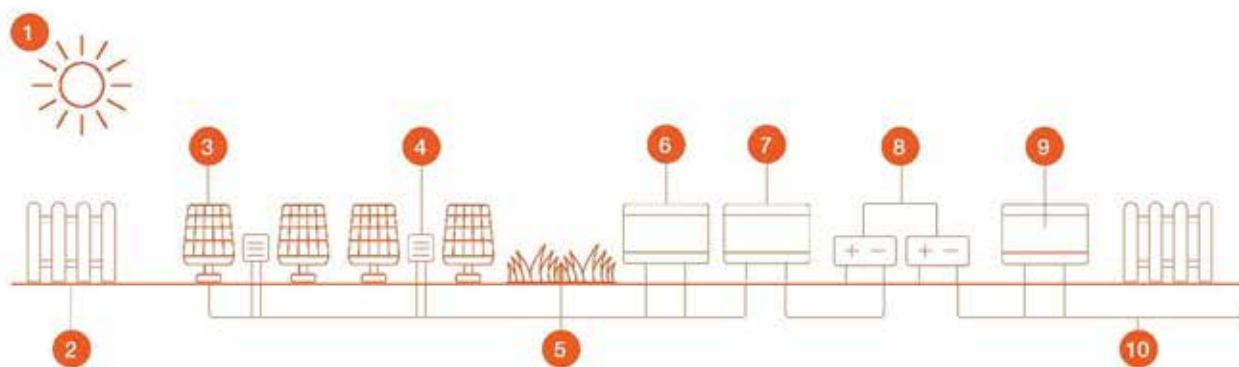
2.1. About our proposals

- 2.1.1. Rosefield is a proposed new solar farm with battery storage. The proposals also include infrastructure to connect Rosefield to the National Grid East Claydon Substation, and any necessary supporting site infrastructure and environmental mitigation, including landscaping.
- 2.1.2. We have secured a grid connection agreement with National Grid that would allow us to export up to 500MW of clean and secure electricity to this network, through the East Claydon Substation owned by National Grid. There would also be capacity to import power from the network.
- 2.1.3. Rosefield is located in the local authority area of Buckinghamshire Council (the host authority). Figure 2 shows the proposed location of Rosefield.
- 2.1.4. Since the first phase of consultation, our proposed Site boundary has been refined. We have:
- Reduced it in areas where we have further refined our proposed underground cable route search areas.
 - Removed the area immediately south of Botolph Claydon to help protect the amenity of the village.
 - Expanded it to accommodate a cable corridor to connect into the National Grid's proposed replacement East Claydon Substation.
 - Added a small section of Snake Lane and Lee Road for potential road widening works.

2.2. How solar farms work

- 2.2.1. The main elements that typically make up a solar farm are outlined below, with each element illustrated in Figure 3.

Figure 3: The components of a solar farm



This diagram shows the main elements that typically make up a solar farm. It is not to scale and for indicative purposes only.

- 2.2.2. Solar farms use energy from the **sun (1)** to generate electricity, with battery storage and a substation feeding it into the National Grid.
- 2.2.3. **Fencing (2)** encloses the operational areas to keep the site secure and the community safe. Deer fencing is usually used where solar panels are located, with more robust fencing near the project substation and battery storage.
- 2.2.4. The **solar panels (3)** are set up in rows, connected to each other by cables to transfer the electricity generated by the panels to inverters.
- 2.2.5. **Inverters (4)** are needed to convert the direct current (DC) electricity generated by the solar panels into alternating current (AC) electricity, which is suitable for use in homes and businesses. Inverters can be located underneath the solar panels or in areas sometimes referred to as 'Balance of Solar System'. The 'Balance of Solar System' also includes switchgears (which control the electrical equipment), and transformers (which 'step up' the voltage to the required level for sending to the solar farm substation).
- 2.2.6. **Landscape and biodiversity areas (5)** to mitigate environmental effects and help boost biodiversity across the site.
- 2.2.7. **Collector compounds (6)** can be used to reduce the amount of underground cabling that is needed by collecting electricity from a number of inverters.

- 2.2.8. The **solar farm substation (7)** receives all the electricity generated by the solar farm, then raises the voltage, before sending it on to the **National Grid substation (9)** to enter the network.
- 2.2.9. The main role of **battery storage (8)** is to store electricity at times when demand is lower and release it to the National Grid when it is most needed.
- 2.2.10. **Underground cables (10)** connect the various components of a solar farm and transport the electricity to the National Grid substation.

2.3. About the developers

- 2.3.1. Rosefield⁴ is a joint venture between EDF Renewables UK and PS Renewables.
- 2.3.2. EDF Renewables UK is a subsidiary of EDF Group, one of the world's largest low carbon electricity companies. EDF Renewables UK has 43 renewable energy sites in the UK totalling more than 1.5 GW, with 14 GW of projects in planning and development, including wind, battery and solar.
- 2.3.3. PS Renewables is an established UK-based renewable energy development and construction company, with an existing solar portfolio totalling more than 850MW.
- 2.3.4. We have a strong track record of working jointly on solar projects.
- 2.3.5. You can find out more about both organisations at: www.edf-re.uk and www.psrenewables.com.

⁴ Rosefield Energyfarm Limited (company No. 11618221), whose registered office is at Alexander House 1 Mandarin Road, Rainton Bridge Business Park, Houghton Le Spring, Sunderland, England, DH4 5RA (referred to in this document as Rosefield).

3. Consulting the community

3.1. Developing our approach to consultation

- 3.1.1. Our approach to consultation has been informed by our early engagement with key stakeholders, as well as our phase one consultation.
- 3.1.2. The phase one consultation was held between 28 September 2023 and 10 November 2023 to introduce our early proposals and gain initial feedback on them.
- 3.1.3. We publicised this consultation by issuing press releases, publishing adverts on social media, online news platforms and in local newspapers, sending a newsletter to 2,887 local addresses around the proposed site and updating the project website with details of the consultation.
- 3.1.4. We wrote to a range of stakeholders to notify them of our consultation, offering briefings or inviting them to our in-person events, including:
 - Buckinghamshire Council Cabinet
 - Grendon Underwood and Great Brickhill ward members
 - The local Member of Parliament
 - Statutory consultees and local environment, business and heritage organisations
 - The following parish councils:
 - Steeple Claydon Parish Council
 - Botolph and East Claydon Parish Council
 - Middle Claydon Parish Council
 - Calvert Green Parish Council
 - Quainton Parish Council
 - Granborough Parish Council
 - Grendon Underwood Parish Council
 - Hogshaw Parish Council
 - Edgcott Parish Council
 - Charndon Parish Council
 - Twyford Parish Council
 - Winslow Parish Council.

- 3.1.5. We presented materials in a range of formats to ensure that everyone with an interest in our plans could find out more and share their feedback. This included:
- Holding five in-person events, with a series of information banners and an interactive 3D model of Rosefield. Members of the project team were available at these events to answer questions.
 - Hosting a virtual exhibition on our project website.
 - Publishing a consultation booklet and questionnaire, which were available on our website, at public events, in hard copy at local community buildings and sent to community members by mail on request.
- 3.1.6. People could share their views by completing an online questionnaire, accessed through the project website, emailing the questionnaire to the project email, posting a hard-copy questionnaire to the Freepost address or submitting comments by email or in writing to the Freepost address.
- 3.1.7. The feedback we have received to date has helped us refine our proposals and shape our approach to consultation and engagement, for example, we plan to host consultation events both during and outside of normal business hours to accommodate a range of different schedules.
- 3.1.8. We have continued to engage with the community and stakeholders since the non-statutory consultation as detailed in Table 1.

Table 1: Ongoing engagement following non-statutory consultation activity

Activity	Summary
Near neighbour engagement	<p>We have written to 31 residents living near the site to request access to complete surveys to help us understand potential visual and amenity impacts.</p> <p>We are grateful to the 14 residents who provided access to their properties to allow us to complete these assessments.</p>
Community engagement	<p>We have created an on-site surveys page on our project website to ensure that the community is being kept up to date with on-site activity: https://rosefieldsolarfarm.co.uk/on-site-surveys/</p> <p>We are continuing to answer enquiries through our communications channels.</p>

Engagement with host authority	We have continued to hold meetings with Buckinghamshire Council since the close of our non-statutory consultation. The purpose of these meetings has been to share updates on Rosefield, including discussions on our approach to consultation and engagement, and to seek feedback on certain aspects of our proposal, such as ecology, archaeology and other topics.
---------------------------------------	--

Engagement with statutory consultees	We have met with statutory and technical consultees to assist with the EIA process and the evolution of our design. This includes relevant statutory bodies such as National Grid, Anglian Water, National Trust, Environment Agency, Historic England, Natural England and Buckinghamshire Berkshire and Oxfordshire Wildlife Trust.
---	---

3.2. Our approach to statutory consultation

- 3.2.1. Our statutory consultation will be inclusive and open to anyone with an interest in Rosefield who considers that they may be directly or indirectly affected by the proposals or has a view that they would like considered.
- 3.2.2. Our multi-phase approach to consultation has ensured that community input has already helped to shape the plans we are presenting. The feedback that we receive from this phase of consultation will help us to further refine our proposals and inform our assessments before we submit our DCO application.
- 3.2.3. We are committed to making sure that everybody has the opportunity to understand and provide their feedback on our proposals for Rosefield. Our key objectives for achieving this through our pre-application consultation include:
 - Ensuring thorough engagement and consultation on our proposals.
 - Ensuring proposals are clearly presented, and issues easily understood.
 - Providing sufficient opportunities for interested parties to understand and influence our plans.
 - Gathering high quality responses to, and feedback on, our plans to help inform proposals.
 - Delivering a consultation that meets the legal requirements and is in accordance with the relevant guidance from the Planning Inspectorate (Planning Act 2008: Pre-application stage for Nationally Significant Infrastructure Projects 2024).

3.3. Timing

- 3.3.1. The statutory consultation will run for eight weeks from 18 September to 14 November 2024. All responses must be received by 11:59pm on 14 November 2024.

3.4. What will we consult on?

- 3.4.1. During the statutory consultation, we will be asking for views on:
- The proposals for Rosefield, including the potential locations of its elements and our proposed environmental enhancements and mitigation.
 - The PEIR, which will present an initial account of the likely significant environmental effects of Rosefield during construction, operation and decommissioning, as well as preliminary details on mitigation measures that we may need to introduce to avoid, prevent, reduce or, if possible, offset any potentially significant adverse effects.
 - How Rosefield could contribute to the local community, including local initiatives or organisations that Rosefield could support over its lifetime.

3.5. Who will we consult?

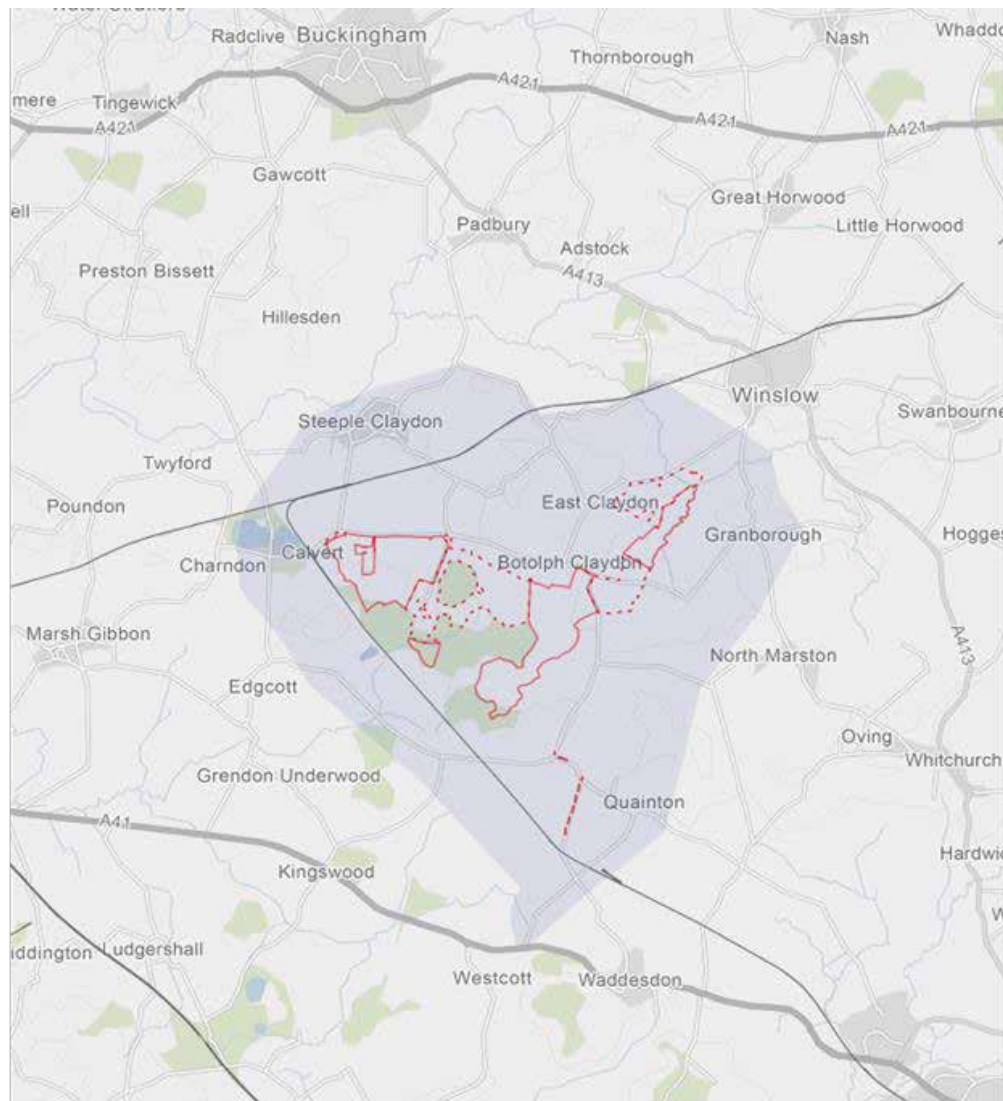
- 3.5.1. The consultation will provide an opportunity for anyone interested in our proposals to find out more and share their feedback.
- 3.5.2. We have defined two geographic zones – an inner zone and an outer zone – for the purpose of consulting with the local community. This recognises the fact that levels of potential impact are likely to vary with distance to the site. These zones have informed how we will publicise the consultation and are set out below, with further detail about the consultation information detailed in sections 3.6.5-3.6.32.
- 3.5.3. We will publicise the consultation in both zones using our project website, by placing adverts in local newspapers and on social media, and by issuing press releases to local media outlets.
- 3.5.4. We will also email those people who have previously registered to receive project updates.

Inner zone

- 3.5.5. The inner zone covers people who live and work closest to the proposed site and their political representatives. Our consultation activity will be most intensive within this zone. A map of this zone is shown in Figure 4.
- 3.5.6. This zone includes all properties within one and a half kilometres of the areas where we are proposing to place solar, battery storage and the Rosefield Substation, extending in some locations to consider the potential wider effects of the proposal and human geographic boundaries. For example, we have extended the inner zone boundary to include:
- Villages with Public Rights of Way that connect into the areas proposed for solar and battery storage, such as Quainton and Steeple Claydon.
 - Locations that were highlighted as important to the local community in non-statutory consultation feedback, such as Quainton Hill.
 - Properties that are near the proposed main access route.
- 3.5.7. A newsletter will be sent to all properties within the inner zone at the beginning of consultation. Where possible, it is intended that public events and deposit points will be focused in or close to this area.
- 3.5.8. We will write to ward members of Buckinghamshire Council, the local Members of Parliament, parish councils and community groups within this zone to offer them a briefing or invite them to our public events, and support them in promoting the consultation using their existing communication channels. Parish Councils located within this zone include:
- Calvert Green Parish Council
 - Steeple Claydon Parish Council
 - Middle Claydon Parish Council
 - East and Botolph Claydon Parish Council
 - Hogshaw Parish Council
 - Quainton Parish Council
 - Granborough Parish Council
 - Winslow Parish Council
 - Grendon Underwood Parish Council
 - Twyford Parish Council
 - Charndon Parish Council
 - Edgcott Parish Council

- North Marston Parish Council
- Hillesden Parish Council
- Westcott Parish Council

Figure 4: Inner zone



LEGEND:



Potential area for solar, battery, ecological enhancements and setbacks



Potential area for underground cable routes, access tracks and temporary construction compounds (locations to be determined)



Inner consultation zone

Outer zone

- 3.5.9. The outer zone covers those living and working in the area outside of the inner zone, who may be affected by or have an interest in our proposals due to the proposals being brought forward in their local authority area. This zone follows the local authority boundary of Buckinghamshire Council.
- 3.5.10. We will publicise the consultation to people in this zone through the project website, by placing adverts in local newspapers and on social media, and by issuing press releases to local media outlets.
- 3.5.11. In addition to these methods, we will write to all Buckinghamshire Council Cabinet members, and the parish councils listed below, to offer them a briefing or invite them to our public events, and support them in promoting the consultation using their existing communication channels.
- Marsh Gibbons Parish Council
 - Waddesdon Parish Council
 - Little Horwood Parish Council
 - Great Horwood Parish Council
 - Preston Bissett Parish Council
 - Woodham Parish Council
 - Swanbourne Parish Council
 - Padbury Parish Council.

Statutory consultees and community organisations

- 3.5.12. At the same time as consulting the local community, we will also consult a range of statutory consultees as set out by Section 42 and Section 48 of the Planning Act 2008 and Regulation 13 of the Infrastructure Planning (Environmental Impact Assessment) Regulations 2017, and additional organisations that we recognise to have an interest in the proposed Rosefield Solar Farm. These groups include:
- The host and neighbouring local authorities
 - Statutory bodies (such as the Environment Agency, Historic England, Natural England and others)
 - Other community groups and organisations that may have an interest in the proposals (such as Berks, Bucks & Oxon Wildlife Trust, Winslow and Villages Community Board, Buckingham and Village Community Board, Aylesbury & District Group Ramblers and others)

- People with an interest in land (e.g. owners or tenants) that may be affected by the proposals.

3.5.13. The proposed DCO application will also be publicised as required by Section 48 of the Planning Act 2008.

3.6. How will we consult?

3.6.1. This section sets out how we intend to consult during the phase two consultation.

3.6.2. We will present information in a variety of formats and enable feedback to be submitted in a number of ways to encourage participation in the consultation. More detail on the consultation techniques we will use is provided in sections 3.6.5-3.6.32.

3.6.3. Should we carry out any further phases of consultation prior to submission of the DCO application, including, if necessary, in response to substantial changes to the project or its effects, our approach to consultation will be informed by the new National Infrastructure Planning Guidance published on 30 April 2024. We will use some, but not necessarily all, of the means of consultation set out in this document and will work with Buckinghamshire Council to assist us in deciding the most appropriate activities for any further phases of consultation.

3.6.4. Following the statutory consultation period, we will continue to provide updates about Rosefield on our website and to statutory consultees as appropriate.

Consultation information

3.6.5. Information about our proposals will be published for consultation in the following formats:

- **A consultation newsletter:** a newsletter issued to addresses within the inner zone setting out how to find out more about the proposals and participate in the consultation; including information on accessing materials, the locations and timings of the public events, and how people can share their feedback. This will additionally be published on the project website to view and download.
- **A consultation booklet:** an accessible summary of our proposals for Rosefield, the EIA process, the consultation and planning process, approach to community benefit and next steps. This will be available in hard copy at deposit points and the public events, mailed on request and published on the project website to view and download.

- **A questionnaire:** the main way we will collect feedback from the community. The questions will be easy to understand and the responses will be considered as we refine our plans. This will be available in hard copy at deposit points and the public events, posted on request and published on the project website to view and download.
 - **A 3D model:** a virtual model of the proposed Rosefield site will be available to view at the public events.
 - **A website:** the project website (www.rosefieldsolarfarm.co.uk) will host all of the consultation documents, including the PEIR, as well as links to a virtual exhibition and online questionnaire. It will also include details of the deposit points and public events as well as hosting contact information for people to get in touch with the team.
 - **A virtual exhibition:** containing the exhibition banners on display at the public events and a link to the online questionnaire and project website. It will host contact information for people to get in touch with the team.
 - **Exhibition banners:** an accessible summary of our proposals for Rosefield, the EIA process, the consultation and planning process, approach to community benefit and next steps which will be displayed at the public events. The exhibition banners will also be available in the virtual exhibition and as PDFs to download from the project website.
 - **The Preliminary Environment Information Report (PEIR):** containing the initial results of our ongoing environmental assessments as well as preliminary information on measures to avoid, prevent, reduce or, if possible, offset any likely significant adverse effects.
- 3.6.6. Printed copies of the SoCC and consultation documents – including the PEIR – will be available in local libraries and community venues ('deposit points') close to the proposed site for Rosefield and maintained throughout the consultation period (see Table 2 below). USBs containing all of these documents will also be available to take away. All materials will be published on the project website (www.rosefieldsolarfarm.co.uk).
- 3.6.7. Deposit points have been selected to ensure they are within or near the inner zone, are accessible and have opening times to accommodate people with different time commitments.
- 3.6.8. The locations of the deposit points, which are listed in Table 2 below, will be publicised in our consultation material, including the newsletter, consultation booklet and on the project website.
- 3.6.9. We will provide hard copies of the consultation booklet, questionnaire and SoCC free of charge on request – as well as USBs containing all of the consultation materials (including the PEIR). We will review requests for hard copies of the PEIR on a case-by-case basis. A fee to cover printing

costs (up to a maximum of £750 for one full set of consultation documents) may be charged to the recipient.

- 3.6.10. Requests for consultation information in alternative formats (e.g. in different languages, large print or easy access) will be considered on a case-by-case basis so we can establish how best to provide the information required.

Table 2: Deposit points

Location	Opening hours*
East and Botolph Claydon Village Hall Botyl Road, Botolph Claydon MK18 2LR	Sunday to Thursday 8am – 11pm Friday and Saturday 8am – 12am
Winslow Community Library Park Rd, Winslow MK18 3DN	Monday 9.30am – 5pm Wednesday 9.30am – 1pm Friday 1 – 5pm Saturday 9.30am – 1pm

*Please check opening times before travelling

Website and virtual exhibition

- 3.6.11. From the start of consultation, the project website (www.rosefieldsolarfarm.co.uk) will host all of the consultation documents, including the PEIR, as well as links to the virtual exhibition and online questionnaire. It will also include details of the deposit points and public events as well as hosting contact information for people to get in touch with the team.
- 3.6.12. The interactive virtual exhibition will be accessed through the website and will provide an alternative format for people to learn about the proposals. It will include information boards which will be on display at the public events, links to documents and the online questionnaire.

Public events

- 3.6.13. We will hold in-person public events during the consultation period to enable anyone with an interest in the proposals to find out more about them and ask questions to members of the team. Printed copies of the consultation booklet, SoCC and questionnaire will be available at these events for members of the public to take away. Completed questionnaires will be able to be returned at the events.

- 3.6.14. The dates and times of these events are listed in Table 3 below. The events are being held in accessible venues around the proposed Rosefield site and have been organised at a range of dates and times to ensure that people with different schedules are able to attend. This includes events after normal working hours and on the weekend.
- 3.6.15. Details about the dates and times of the public events will be published on the project website, in the consultation newsletter and booklet. The schedule will also be included in supporting publicity such as newspaper and social media adverts. We will consider requests for additional events throughout the consultation period on a case-by-case basis. Any further events would be publicised on the project website, using social media adverts and, if possible, at the venue.
- 3.6.16. In the unlikely event that there are changes to the locations or times of our events, we will publicise this information on our website.

Table 3: Public events

Public event location	Date and time
Calvert Green Village Hall and Brickworx Bar Cotswolds Way, Calvert MK18 2FJ	Thursday 3 October 2pm-6pm
East and Botolph Claydon Village Hall Botyl Road, Botolph Claydon MK18 2LR	Friday 4 October 4pm-8pm
Quainton Memorial Hall Station Rd, Quainton, Aylesbury HP22 4BW	Saturday 5 October 10am-2pm
Steeple Claydon Village Hall 48 Queen Catherine Rd, Steeple Claydon MK18 2PY	Friday 18 October 3.30pm-8pm
Quainton Memorial Hall Station Rd, Quainton, Aylesbury HP22 4BW	Saturday 19 October 10am-2pm

Presentations and stakeholder meetings

- 3.6.17. We welcome reasonable requests for presentations and briefings from stakeholder groups, for example: local authorities, parish councils, and local community groups, during the consultation period.
- 3.6.18. A reasonable request is defined as a request:
- received during the consultation period;

- from an organisation or individual who requires an additional way to find out more about our proposals or to provide feedback, which cannot be accommodated by the consultation activities outlined in this SoCC.

- 3.6.19. Other activities will be carried out, if considered necessary and appropriate, to engage specific interests or seldom heard groups (see section 3.6.31-3.6.32). This could include, for example, further meetings with residents who are closest to the proposed site.
- 3.6.20. Details of all our consultation activity will be included in a Consultation Report which we will submit as part of our DCO application.

Publicity and advertising

- 3.6.21. We will publicise the consultation and associated activities in local media ahead of the start of the consultation period and will update local broadcast and print media channels on our activity during the consultation.
- 3.6.22. Where publication timings allow, we will seek to use local newsletters to further engage with local communities.
- 3.6.23. Statutory notices will be published in line with Section 47 and Section 48 of the Planning Act.

Social media

- 3.6.24. We will use Meta social media advertising to help publicise the consultation and encourage those with an interest in our proposals to get involved. We would also publicise the consultation by publishing content on EDF Renewable's company LinkedIn page. We are unable to accept feedback via social media.

Consultation hotline and email address

- 3.6.25. To find out more information or request copies of the consultation materials, anyone can contact the consultation team by freephone (0800 861 1097) during normal business hours (Monday to Friday, 9am to 5:30pm). Outside of these hours, callers will be able to leave a message requesting a callback.
- 3.6.26. Alternatively, people can email info@rosefieldsolarfarm.co.uk or write to the team via Freepost (no stamp required): Rosefield Solar Farm, FREEPOST SEC Newgate UK LOCAL.

Collection of responses

- 3.6.27. We will produce a questionnaire inviting feedback on different elements of the proposed Rosefield. The questionnaire will be available to complete on the project website: www.rosefieldsolarfarm.co.uk, in printed form at public events, at deposit points around the local area and on request using the project contact details.
- 3.6.28. The completed hard-copy questionnaire can be returned using the Freepost address set out in this document during the consultation period, or at the public events.
- 3.6.29. Respondents will also be able to complete the questionnaire online, which will be made available through the project website: www.rosefieldsolarfarm.co.uk as well as the virtual exhibition.
- 3.6.30. Alternatively, respondents can write to us via email or Freepost using the details set out in this document. All written feedback will be accepted.

Seldom heard audiences

- 3.6.31. It is important to ensure that everyone with an interest in the proposals has the opportunity to comment on our proposals as part of the consultation. We want our consultation to be inclusive and gather feedback from a wide range of audiences, including those who are seldom heard in public consultations such as people without internet access, seasonal workers, younger people and socially isolated people. We will do this by:
- Writing to the local authority and organisations representing seldom heard individuals and groups directly.
 - Choosing accessible venues for deposit points and public events.
 - Publicising the consultation in digital and print editions of local newspapers.
 - Publicising the consultation using Meta social media advertising to help reach young people.
 - Holding public events at a variety of times, including evenings and weekends to enable participation by people with different time commitments.
 - Making provision for people without internet access through the consultation programme. This includes sending a consultation newsletter to every address within the inner zone, holding public events in the area, publicising the consultation in print editions of local newspapers and making hard copies of consultation materials available on-request and at deposit points.

- 3.6.32. Requests for consultation information in alternative formats (e.g. in different languages, large print or easy access) will be considered on a case-by-case basis so we can establish how best to provide the information required.

4. Consultation arrangements

4.1. How to find out more

4.1.1. Anyone can find out more by:

- Contacting us on 0800 861 1097 or info@rosefieldsolarfarm.co.uk or by writing to the Freepost address (Rosefield Solar Farm, FREEPOST SEC Newgate UK LOCAL).
- Attending a public event which we will hold in locations around the proposed Rosefield site.
- Viewing the virtual exhibition on our website: www.rosefieldsolarfarm.co.uk
- Reading the consultation booklet which will be available online or in hard copy on request, at deposit points around the area and at the public events.
- Reviewing the PEIR by going to www.rosefieldsolarfarm.co.uk or visiting a deposit point.

4.2. Responding to the consultation

4.2.1. The consultation provides an opportunity for anyone interested in our proposals to find out more and share their feedback. We welcome feedback on our proposals for Rosefield. Anyone can share their views by:

- Completing the consultation questionnaire online at www.rosefieldsolarfarm.co.uk.
- Returning a questionnaire by Freepost (no stamp required) to the following address: Rosefield Solar Farm, FREEPOST SEC Newgate UK LOCAL.
- Returning a questionnaire by email: info@rosefieldsolarfarm.co.uk.
- Submitting comments by email to info@rosefieldsolarfarm.co.uk or in writing to the above Freepost address.

4.2.2. Responses must be received by the consultation deadline of 11:59pm on 14 November 2024.

4.2.3. Responses must be individual. Petitions will be treated as a single response for the purpose of the Consultation Report.

4.3. How we will consider the responses

- 4.3.1. Following this consultation, we will consider all of the feedback we receive as we continue refining our proposals for Rosefield before submitting a DCO application. The DCO application will include a Consultation Report, which will set out how we have consulted, summarise the responses received and explain how we have had regard to them.
- 4.3.2. Any comments received will be analysed by Rosefield and its appointed agents. Copies may be made available to the Secretary of State, the Planning Inspectorate and other relevant statutory authorities so that feedback can be considered part of the DCO process. We will request that any personal details are not placed on the public record and will be held securely by Rosefield and its agents in accordance with data protection laws. Any personal details will be used solely in connection with the consultation process and subsequent DCO application and, except as noted above, will not be passed to third parties.
- 4.3.3. The Planning Inspectorate has also published details of how it manages comments received in a Privacy Notice available on its website: <https://www.gov.uk/government/publications/planning-inspectorate-privacynotices/customer-privacy-notice>.

4.4. Further information

- 4.4.1. For further information, please contact us by:
- Calling 0800 861 1097 (9:00am to 5:30pm, Monday to Friday)
 - Emailing info@rosefieldsolarfarm.co.uk
 - Writing to the team at Rosefield Solar Farm FREEPOST SEC Newgate UK Local.



rosefieldsolarfarm.co.uk

**Appendix D-1.2 -
Amended title
page published on
10 October 2024
and screenshot
showing update to
Rosefield Solar
Farm project
website**



Title page clarification: The word 'draft' was included on the title page of this document in error, however the content of the document is not draft. This is the Rosefield Solar Farm Statement of Community Consultation as advertised in public notices on 04 September 2024 in the Winslow Advertiser and The Bucks Herald.

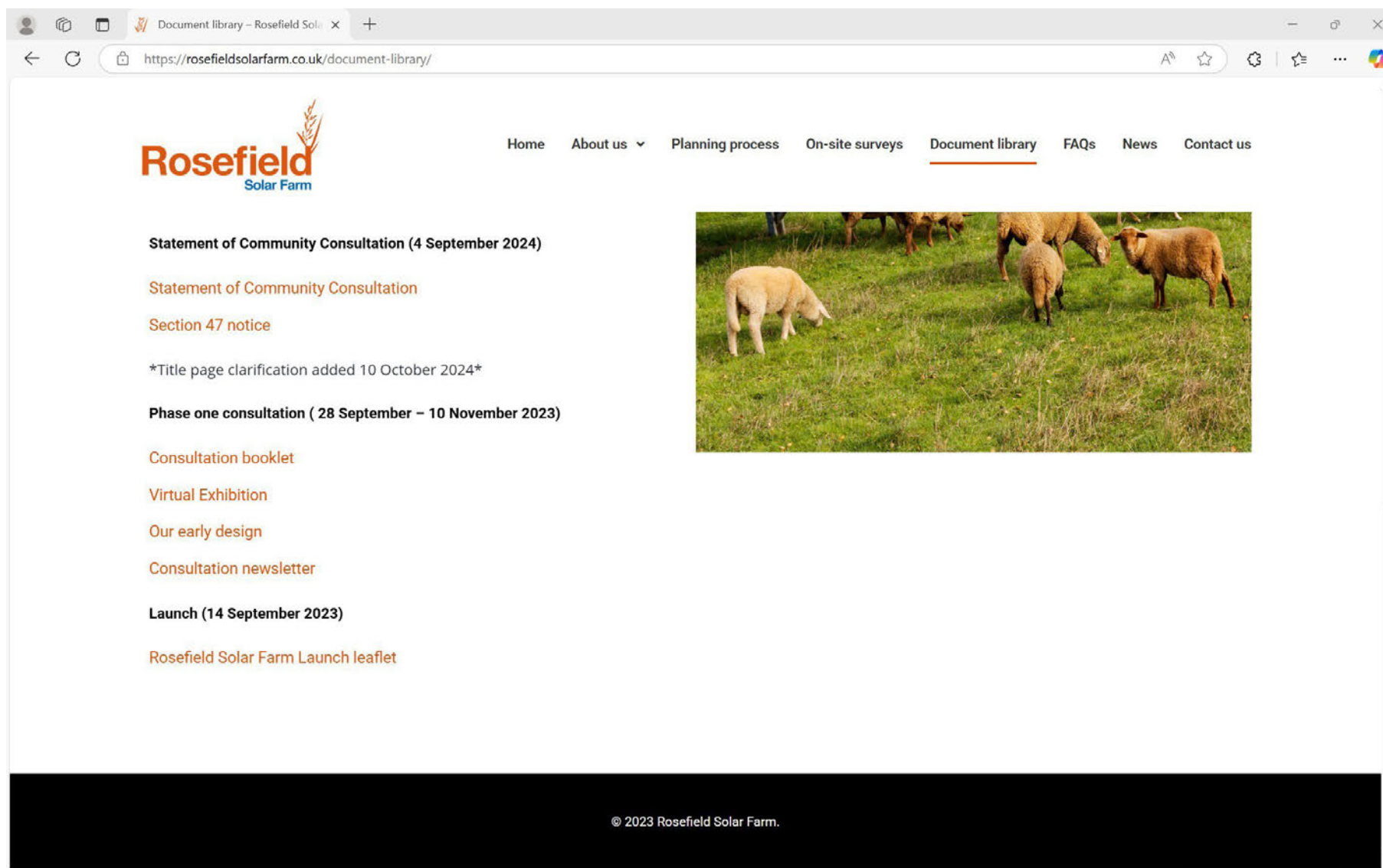
Rosefield Solar Farm

Draft Statement of Community Consultation

Phase Two Consultation

4 September 2024





Appendix D-2 - Section 47 notice



Since 1832

The Bucks Herald

Get Bucks news to your inbox, visit [bucksherald.co.uk/newsletter](https://www.bucksherald.co.uk/newsletter)



PUBLIC NOTICES

PLANNING NOTICES



SECTION 47(6) PLANNING ACT 2008 – ROSEFIELD SOLAR FARM
NOTICE OF PUBLICATION OF STATEMENT OF COMMUNITY CONSULTATION

Notice is hereby given that Rosefield Energyfarm Limited (11618221) of Alexander House 1 Mandarin Road, Rainton Bridge Business Park, Houghton Le Spring, Sunderland, England, DH4 5RA (the "Applicant") has produced a Statement of Community Consultation ("SoCC") in accordance with Section 47 of the Planning Act 2008. The SoCC has been prepared in respect of a proposed application (the "Application") under section 37 of the Planning Act 2008 to the Secretary of State for Energy Security and Net Zero for a Development Consent Order ("DCO").

Rosefield Solar Farm would comprise the construction, operation and maintenance, and decommissioning of a ground-mounted solar photovoltaic ("PV") array electricity generating facility and battery storage facility with a total capacity exceeding 50 megawatts ("MW") and import/export connection to the National Electricity Transmission System ("the Proposed Development").

The Proposed Development would be located on approximately 771 hectares of land within the administrative boundary of Buckinghamshire Council close to the settlements of Steeple Claydon, East Claydon, Middle Claydon, Botolph Claydon and Calvert ("the Site").

The DCO would authorise:

- construction, operation (including maintenance) and decommissioning of ground mounted solar PV arrays, Balance of Solar System, Collector Compounds and Battery Energy Storage System, along with distribution cables..
- other association and ancillary works including a new substation, known as Rosefield Substation, which would be connected to the PV arrays and battery storage via distribution cables. Underground cabling would connect to the Rosefield Substation to the point of connection into the National Electricity Transmission System via a 400kV grid connection cable route.
- offsite highway works (if required).
- other infrastructure works including on-site cabling, ancillary buildings such as offices and welfare areas, access tracks, and any other works identified as necessary to enable the Proposed Development. There would also be parts of the Site used for landscaping which would include features such as biodiversity mitigation and enhancement measures, amenity improvements and fencing.
- the compulsory acquisition of land and/or rights and the taking of temporary possession of land.
- the overriding of easements and other rights over or affecting land.
- the application and/or disapplication of legislation relating to the Proposed Development.
- such ancillary, incidental and consequential provisions, licences, property rights, permits and consents as are necessary and and/or convenient.

As the Proposed Development would generate in excess of 50MW of electrical capacity, it is classed as a Nationally Significant Infrastructure Project under the Planning Act 2008. Accordingly, the Applicant must apply to the Secretary of State for a DCO under the Planning Act 2008.

The Applicant will shortly commence a pre-application consultation on the Proposed Development which will run between **Wednesday 18 September and 11.59pm on Thursday 14 November 2024**. The purpose of this consultation is to obtain views on the Proposed Development ahead of the submission of the DCO application.

The Proposed Development is an Environmental Impact Assessment ("EIA") development and accordingly a Preliminary Environmental Information Report ("PEIR") has been produced and is included as part of the consultation materials. The PEIR sets out the preliminary environmental information on the Proposed Development. The Applicant is carrying out an EIA and will submit an Environmental Statement as part of its DCO application.

The SoCC explains how the Applicant will consult with the local community and stakeholders about the Proposed Development. The SoCC can be viewed free of charge at www.rosefieldsolarfarm.co.uk, at the deposit locations set out in Table 1 or can also be made available on USB or in hard copy on request to the Applicant from 4 September 2024.

The consultation materials (including the PEIR) can be viewed in the same way from the start of the consultation period on Wednesday 18 September 2024.

Copies of the consultation materials will also be available on USB or in hard copy on request to the Applicant from the start of the consultation period. The Applicant will provide USBs containing all the consultation materials – including the PEIR – free of charge. Hard copies of the consultation booklet, SoCC and questionnaire will be available free of charge. Requests for hard copies of the PEIR will be reviewed on a case-by-case basis. A fee to cover printing costs (up to maximum of £750 for one full set of consultation documents) may be charged to the recipient. Materials in an alternate format can be requested using the contact information below.

In addition, the Applicant is hosting a number of public events to enable people to find out more about the Proposed Development and share their feedback. See Table 2 for more information.

Those wanting to submit a consultation response must do so by the deadline of 11.59pm on Thursday 14 November 2024. A response can be provided in any of the following ways from the start of consultation on 18 September 2024:

- Complete an online questionnaire at <https://rosefieldsolarfarm.co.uk/>
- Return a questionnaire by Freepost (no stamp required) to: Rosefield Solar Farm, FREEPOST SEC Newgate UK LOCAL.
- Return a questionnaire by email: info@rosefieldsolarfarm.co.uk
- Submit comments by email to info@rosefieldsolarfarm.co.uk or in writing to the Freepost address.

For more information on the consultation, to request copies of documents and USBs, or to arrange to speak to a member of the team, people can contact us by calling 0800 8611097 (Monday to Friday, 9am-5:30pm). Alternatively, email info@rosefieldsolarfarm.co.uk or visit the project website, <https://rosefieldsolarfarm.co.uk/>

Table 1: Deposit locations

Deposit location	Opening hours
East and Botolph Claydon Village Hall Botyl Road, Botolph Claydon MK18 2LR	Monday to Thursday 8am-11pm Friday to Saturday 8am-12am
Winslow Community Library Park Rd, Winslow MK18 3DN	Monday 9.30am – 5pm, Wednesday 9.30am – 1pm Friday 1 – 5pm, Saturday 9.30am – 1pm

*Please check opening times before travelling

Table 2: Public event locations

Public event location	Date and time
Calvert Green Village Hall and Brickworx Bar Cotswolds Way, Calvert MK18 2FJ	Thursday 3 October 2pm-6pm
East and Botolph Claydon Village Hall Botyl Road, Botolph Claydon MK18 2LR	Friday 4 October 4pm-8pm
Quainton Memorial Hall Station Rd, Quainton, Aylesbury HP22 4BW	Saturday 5 October 10am-2pm
Steeple Claydon Village Hall 48 Queen Catherine Rd, Steeple Claydon MK18 2PY	Friday 18 October 3.30pm-8pm
Quainton Memorial Hall Station Rd, Quainton, Aylesbury HP22 4BW	Saturday 19 October 10am-2pm

Buckingham and Winslow Since 1853

ADVERTISER

Incorporating Brackley & Towcester

buckinghamtoday.co.uk Visit us online for breaking news

Wednesday, September 4, 2024

£1.60

PUBLIC NOTICES

PLANNING NOTICES



SECTION 47(6) PLANNING ACT 2008 – ROSEFIELD SOLAR FARM
NOTICE OF PUBLICATION OF STATEMENT OF COMMUNITY CONSULTATION

Notice is hereby given that Rosefield Energyfarm Limited (11618221) of Alexander House 1 Mandarin Road, Rainton Bridge Business Park, Houghton Le Spring, Sunderland, England, DH4 5RA (the "Applicant") has produced a Statement of Community Consultation ("SoCC") in accordance with Section 47 of the Planning Act 2008. The SoCC has been prepared in respect of a proposed application (the "Application") under section 37 of the Planning Act 2008 to the Secretary of State for Energy Security and Net Zero for a Development Consent Order ("DCO").

Rosefield Solar Farm would comprise the construction, operation and maintenance, and decommissioning of a ground-mounted solar photovoltaic ("PV") array electricity generating facility and battery storage facility with a total capacity exceeding 50 megawatts ("MW") and import/export connection to the National Electricity Transmission System ("the Proposed Development").

The Proposed Development would be located on approximately 771 hectares of land within the administrative boundary of Buckinghamshire Council close to the settlements of Steeple Claydon, East Claydon, Middle Claydon, Botolph Claydon and Calvert ("the Site").

The DCO would authorise:

- construction, operation (including maintenance) and decommissioning of ground mounted solar PV arrays, Balance of Solar System, Collector Compounds and Battery Energy Storage System, along with distribution cables..
- other association and ancillary works including a new substation, known as Rosefield Substation, which would be connected to the PV arrays and battery storage via distribution cables. Underground cabling would connect to the Rosefield Substation to the point of connection into the National Electricity Transmission System via a 400kV grid connection cable route.
- offsite highway works (if required).
- other infrastructure works including on-site cabling, ancillary buildings such as offices and welfare areas, access tracks, and any other works identified as necessary to enable the Proposed Development. There would also be parts of the Site used for landscaping which would include features such as biodiversity mitigation and enhancement measures, amenity improvements and fencing.
- the compulsory acquisition of land and/or rights and the taking of temporary possession of land.
- the overriding of easements and other rights over or affecting land.
- the application and/or disapplication of legislation relating to the Proposed Development.
- such ancillary, incidental and consequential provisions, licences, property rights, permits and consents as are necessary and and/or convenient.

As the Proposed Development would generate in excess of 50MW of electrical capacity, it is classed as a Nationally Significant Infrastructure Project under the Planning Act 2008. Accordingly, the Applicant must apply to the Secretary of State for a DCO under the Planning Act 2008.

The Applicant will shortly commence a pre-application consultation on the Proposed Development which will run between **Wednesday 18 September and 11.59pm on Thursday 14 November 2024**. The purpose of this consultation is to obtain views on the Proposed Development ahead of the submission of the DCO application.

The Proposed Development is an Environmental Impact Assessment ("EIA") development and accordingly a Preliminary Environmental Information Report ("PEIR") has been produced and is included as part of the consultation materials. The PEIR sets out the preliminary environmental information on the Proposed Development. The Applicant is carrying out an EIA and will submit an Environmental Statement as part of its DCO application.

The SoCC explains how the Applicant will consult with the local community and stakeholders about the Proposed Development. The SoCC can be viewed free of charge at www.rosefieldsolarfarm.co.uk, at the deposit locations set out in Table 1 or can also be made available on USB or in hard copy on request to the Applicant from 4 September 2024.

The consultation materials (including the PEIR) can be viewed in the same way from the start of the consultation period on Wednesday 18 September 2024.

Copies of the consultation materials will also be available on USB or in hard copy on request to the Applicant from the start of the consultation period. The Applicant will provide USBs containing all the consultation materials – including the PEIR – free of charge. Hard copies of the consultation booklet, SoCC and questionnaire will be available free of charge. Requests for hard copies of the PEIR will be reviewed on a case-by-case basis. A fee to cover printing costs (up to maximum of £750 for one full set of consultation documents) may be charged to the recipient. Materials in an alternate format can be requested using the contact information below.

In addition, the Applicant is hosting a number of public events to enable people to find out more about the Proposed Development and share their feedback. See Table 2 for more information.

Those wanting to submit a consultation response must do so by the deadline of 11.59pm on Thursday 14 November 2024. A response can be provided in any of the following ways from the start of consultation on 18 September 2024:

- Complete an online questionnaire at <https://rosefieldsolarfarm.co.uk/>
- Return a questionnaire by Freepost (no stamp required) to: Rosefield Solar Farm, FREEPOST SEC Newgate UK LOCAL.
- Return a questionnaire by email: info@rosefieldsolarfarm.co.uk
- Submit comments by email to info@rosefieldsolarfarm.co.uk or in writing to the Freepost address.

For more information on the consultation, to request copies of documents and USBs, or to arrange to speak to a member of the team, people can contact us by calling 0800 8611097 (Monday to Friday, 9am-5:30pm). Alternatively, email info@rosefieldsolarfarm.co.uk or visit the project website, <https://rosefieldsolarfarm.co.uk/>

Table 1: Deposit locations

Deposit location	Opening hours
East and Botolph Claydon Village Hall Botyl Road, Botolph Claydon MK18 2LR	Monday to Thursday 8am-11pm Friday to Saturday 8am-12am
Winslow Community Library Park Rd, Winslow MK18 3DN	Monday 9.30am – 5pm, Wednesday 9.30am – 1pm Friday 1 – 5pm, Saturday 9.30am – 1pm

*Please check opening times before travelling

Table 2: Public event locations

Public event location	Date and time
Calvert Green Village Hall and Brickworx Bar Cotswolds Way, Calvert MK18 2FJ	Thursday 3 October 2pm-6pm
East and Botolph Claydon Village Hall Botyl Road, Botolph Claydon MK18 2LR	Friday 4 October 4pm-8pm
Quainton Memorial Hall Station Rd, Quainton, Aylesbury HP22 4BW	Saturday 5 October 10am-2pm
Steeple Claydon Village Hall 48 Queen Catherine Rd, Steeple Claydon MK18 2PY	Friday 18 October 3.30pm-8pm
Quainton Memorial Hall Station Rd, Quainton, Aylesbury HP22 4BW	Saturday 19 October 10am-2pm

Appendix D-3 – Screenshot of Rosefield Solar Farm project website with availability of the SoCC



Document library – Rosefield Solar Farm

https://rosefieldsolarfarm.co.uk/document-library/

Rosefield Solar Farm

Home About us Planning process Public Consultation On-site surveys Document library FAQs News Contact us

Statement of Community Consultation (4 September 2024)

Statement of Community Consultation

Non-statutory consultation (28 September – 10 November 2023)

Consultation booklet


Virtual Exhibition

Our early design

Consultation newsletter

Launch (14 September 2023)

Rosefield Solar Farm Launch leaflet



© 2023 Rosefield Solar Farm.

10:56 04/09/2024



Appendix D-4 - Compliance with the SoCC



Appendix D-4: Compliance with the SoCC

Table D-1: Compliance with the SoCC

Page	Section	SoCC Commitment	Detail
3	1.1.10	<i>Before we carry out the phase two consultation, we must publish a statement of how we will consult with the local community – known as a Statement of Community Consultation ('SoCC').</i>	The Applicant published the SoCC on 04 September 2024, two weeks ahead of the commencement of its Phase Two Consultation on 18 September 2024. The methods used to publicise the availability of the SoCC are detailed in Chapter 4 of the Consultation Report [EN010158/APP/5.1] .
3	1.1.10	<i>This SoCC has been prepared and publicised in accordance with Section 47 of the Planning Act 2008, Regulation 12 of the Infrastructure Planning (Environmental Impact Assessment) Regulations 2017 and relevant guidance from the Planning Inspectorate (Planning Act 2008: Pre-application stage for Nationally Significant Infrastructure Projects 2024)</i>	Details of how the Applicant has complied with all statutory requirements and guidance is set out in the Consultation Report [EN010158/APP/5.1] . The Applicant has set out how it has responded to relevant guidance from the Planning Inspectorate in Appendix L-1: Compliance with PA 2008: Guidance on the pre-application stage for NSIPs, April 2024 [EN010158/APP/5.2] .
3	1.1.11	<i>It also reflects the feedback we have received from the host local authority for Rosefield – Buckinghamshire Council – which we have consulted in the preparation of this document.</i>	The Applicant consulted with the host authority informally and formally on the contents of the draft SoCC and had regard to their comments in preparing the final SoCC. This is summarised in Chapter 4 of the Consultation Report [EN010158/APP/5.1] . For more information on how the Applicant has had regard to informal and formal feedback received from the host authority on the draft SoCC, see Appendix C-2: Regard had to host authority informal feedback on draft SoCC [EN010158/APP/5.2] and Appendix

C-4: Regard had to host authority formal feedback on draft SoCC [EN010158/APP/5.2].

3	1.1.12	<i>As part of our DCO application, we will submit a Consultation Report detailing how we consulted, the feedback that we received during statutory consultation and how we have had regard to it.</i>	A Consultation Report [EN010158/APP/5.1] and its related Appendices [EN010158/APP/5.2] form part of the Application.
4	1.2.2	<i>At the statutory consultation, we will be sharing the preliminary results of our ongoing environmental assessments as well as information on mitigation measures that we may need to introduce to avoid, prevent, reduce or, if possible, offset any likely significant adverse effects. We will do so in a Preliminary Environmental Information Report ('PEIR') document</i>	<p>The Applicant published the PEIR (see Appendix I-1: Preliminary Environmental Information Report [EN010158/APP/5.2]) as part of its Phase Two Consultation which was available for the local community and stakeholders to examine during the consultation period in the manner set out in Chapter 5 of the Consultation Report [EN010158/APP/5.1].</p> <p>The Applicant published an addendum to the PEIR as part of its targeted consultation on its proposed layout changes which confirmed potential environmental effects expected as a result of the changes. This is described in Chapter 7 of the Consultation Report [EN010158/APP/5.1].</p>
10	3.1.1	<i>Our approach to consultation has been informed by our early engagement with key stakeholders, as well as our phase one consultation.</i>	Prior to its Phase Two Consultation, the Applicant carried out a period of non-statutory consultation ("Phase One Consultation") on its early plans and proposals and began a programme of engagement with stakeholders, which informed the Applicant's approach to consultation. This is described in Chapter 2 of the Consultation Report [EN010158/APP/5.1] .

11	3.1.7	<i>The feedback we have received to date has helped us refine our proposals and shape our approach to consultation and engagement, for example, we plan to host consultation events both during and outside of normal business hours to accommodate a range of different schedules.</i>	<p>The Applicant sought to incorporate any feedback on its Phase One Consultation into its plans for Phase Two Consultation. This included:</p> <ul style="list-style-type: none"> • Adjusting the times of public events to accommodate different people's schedules. • Setting the inner zone of consultation to include places raised as important in feedback, e.g. Quainton Hill. • Publishing an Outline Construction Traffic Management Plan for consultation due to concerns about construction traffic raised in feedback to Phase One Consultation.
12	3.2.1	<i>Our statutory consultation will be inclusive and open to anyone with an interest in Rosefield who considers that they may be directly or indirectly affected by the proposals or has a view that they would like considered.</i>	<p>The Applicant used a variety of methods and techniques to ensure that anyone with an interest in the Proposed Development could access information and provide their feedback. Information on how this was achieved is provided in Chapter 5 of the Consultation Report [EN010158/APP/5.1].</p>
12	3.2.2	<i>The feedback that we receive from this phase of consultation will help us to further refine our proposals and inform our assessments before we submit our DCO application.</i>	<p>The Applicant has carefully considered all feedback received to its Phase Two Consultation, as explained in Chapters 5 and 6 of the Consultation Report [EN010158/APP/5.1].</p> <p>The Applicant has responded to feedback received to Phase Two Consultation in Appendices J-1: Summary of Section 42(1)(a)(b) and (d) responses to Phase Two Consultation and consideration by topic and J- 2: Summary of Section 47 responses to Phase Two Consultation and consideration by topic [EN010158/APP/5.2].</p> <p>The Applicant has carefully considered all feedback received to its targeted consultation, as explained in Chapter 7 of the</p>

Consultation Report [EN010158/APP/5.1]. The Applicant has responded to feedback received to targeted consultation in **Appendix K-3: Summary of responses to targeted consultation and consideration by topic [EN010158/APP/5.2].**

We are committed to making sure that everybody has the opportunity to understand and provide their feedback on our proposals for Rosefield. Our key objectives for achieving this through our pre-application consultation include:

- *Ensuring thorough engagement and consultation on our proposals.*
- *Ensuring proposals are clearly presented, and issues easily understood.*
- *Providing sufficient opportunities for interested parties to understand and influence our plans.*
- *Gathering high quality responses to, and feedback on, our plans to help inform proposals.*
- *Delivering a consultation that meets the legal requirements and is in accordance with the relevant guidance from the Planning Inspectorate (Planning Act 2008:*

The Applicant has achieved its objectives through its Phase Two Consultation by employing a range of different techniques to ensure that anyone with an interest in the Proposed Development could find out more about the proposals and provide their feedback. **Chapter 5** of the **Consultation Report [EN010158/APP/5.1]** sets out the activities and techniques undertaken by the Applicant to promote the consultation.

Pre-application stage for Nationally Significant Infrastructure Projects 2024).

- 13 3.3.1 *The statutory consultation will run for eight weeks from 18 September to 14 November 2024. All responses must be received by 11:59pm on 14 November 2024.*

The consultation period stated out in the SoCC was eight-weeks (between 18 September and 14 November 2024).

During the Phase Two Consultation, the Applicant extended the consultation period stated in the SoCC by 21 days to 11:59pm on 05 December 2024 (78 days total). This was to allow respondents to consider additional information published on 07 November 2024. Respondents therefore had in excess of 11 weeks to provide feedback as part of the consultation.

For more information, see **Chapter 5** of the **Consultation Report [EN010158/APP/5.1]**.

During the statutory consultation, we will be asking for views on:

- *The proposals for Rosefield, including the potential locations of its elements and our proposed environmental enhancements and mitigation.*
- *The PEIR, which will present an initial account of the likely significant environmental effects of Rosefield during construction, operation and decommissioning, as well as preliminary details on mitigation measures that we may need to introduce to avoid, prevent, reduce*

The Applicant invited feedback on all elements of the Proposed Development. Details about the Proposed Development were set out in a range of consultation materials enabling anyone with an interest in the Proposed Development to find out more about the proposals and provide their feedback. Copies of the consultation materials are available at **Appendix G-2: Phase Two Consultation materials and advertising [EN010158/APP/5.2]**. More detail about the different techniques used to publicise the consultation is available in **Chapter 5** of the **Consultation Report [EN010158/APP/5.1]**.

As part of the additional targeted consultations, the Applicant primarily sought feedback on proposed layout changes in Parcel 3 and the inclusion of additional land within the proposed Site boundary. More information is available in

		<p><i>or, if possible, offset any potentially significant adverse effects.</i></p> <ul style="list-style-type: none"> <i>How Rosefield could contribute to the local community, including local initiatives or organisations that Rosefield could support over its lifetime.</i> 	<p>Chapter 7 of the Consultation Report [EN010158/APP/5.1]. Copies of the consultation materials published as part of the additional targeted consultations are available at Appendix K-2: Materials for targeted consultations on proposed additional land and proposed layout changes [EN010158/APP/5.2].</p>
3.5.2	13	<p><i>We have defined two geographic zones – an inner zone and an outer zone – for the purpose of consulting with the local community. This recognises the fact that levels of potential impact are likely to vary with distance to the site. These zones have informed how we will publicise the consultation.</i></p>	<p>The Applicant defined two geographic zones of the consultation for the purposes of consulting the community. The two zones, and the techniques used to promote the consultation within each zone, are described in Chapter 5 of the Consultation Report [EN010158/APP/5.1].</p>
3.5.3	13	<p><i>We will publicise the consultation in both zones using our project website, by placing adverts in local newspapers and on social media, and by issuing press releases to local media outlets.</i></p>	<p>As required by section 48 of the PA 2008, the Applicant publicised the Phase Two Consultation in the following newspapers:</p> <ul style="list-style-type: none"> • The Bucks Herald • The Guardian • London Gazette <p>Copies of the newspaper notices are available in Copies of Newspaper Notices [EN010158/APP/1.7].</p>

3.5.4	13	<i>We will also email those people who have previously registered to receive project updates.</i>	At the launch of Phase Two Consultation, the Applicant emailed a range of people, groups and organisations including people who had indicated they wished to be kept updated on the project, statutory consultees, as well as community groups and organisations likely to have an interest in the Proposed Development. For more information, please see Chapter 5 of the Consultation Report [EN010158/APP/5.1] .
3.5.5	14	<i>The inner zone covers people who live and work closest to the proposed site and their political representatives. Our consultation activity will be most intensive within this zone.</i>	The Applicant focused activity within the inner zone of consultation. This included sending a newsletter publicising the SoCC and consultation to all addresses within the inner zone on 04 September 2024. Where possible, public events and deposit points were focused in this area. The Applicant also wrote to political representatives and community groups within this zone with information about the consultation, encouraging them to promote the consultation using their existing communication channels. More information is available in Chapter 5 of the Consultation Report [EN010158/APP/5.1] .
3.5.6	14	<i>This zone includes all properties within one and a half kilometres of the areas where we are proposing to place solar, battery storage and the Rosefield Substation, extending in some locations to consider the potential wider effects of the proposal and human geographic boundaries.</i>	A map showing the inner zone of consultation is included in Figure 5-3 of the Consultation Report [EN010158/APP/5.1] .
3.5.7	14	<i>A newsletter will be sent to all properties within the inner zone at the beginning of consultation. Where possible, it is intended</i>	A newsletter was distributed to all addresses on 04 September 2024 within the inner consultation zone – totalling 2,993

that public events and deposit points will be focused in or close to this area.

addresses (see **Appendix G-2: Phase Two Consultation materials and advertising [EN010158/APP/5.2]**).

The five public events that were held as part of Phase Two Consultation were held within the inner consultation zone. Winslow Community Library and Botolph Claydon & East Claydon Village Hall were used as deposit points. Botolph Claydon & East Claydon Village Hall is located within the inner zone of consultation. Winslow Community Library is located within the outer zone of consultation. The venues were selected in agreement with host authority.

For more information, see **Chapter 5 of the Consultation Report [EN010158/APP/5.1]**.

The targeted consultations were limited to land interests and statutory and non-statutory consultees likely to have an interest in the proposed changes. The targeted consultations did not require public events or deposit points.

3.5.8 14 *We will write to ward members of Buckinghamshire Council, the local Members of Parliament, parish councils and community groups within this zone to offer them a briefing or invite them to our public events, and support them in promoting the consultation using their existing communication channels.*

The Applicant wrote to political representatives and community organisations within the inner zone to offer a briefing on the proposals and share details of the consultation.

As part of the additional targeted consultations, the Applicant wrote to members representing the ward in which the Proposed Development is located to offer them a briefing on the proposed changes.

For more information, see **Chapter 5 of the Consultation Report [EN010158/APP/5.1]**.

- 3.5.9 16 *The outer zone covers those living and working in the area outside of the inner zone, who may be affected by or have an interest in our proposals due to the proposals being brought forward in their local authority area. This zone follows the local authority boundary of Buckinghamshire Council.*
- We will publicise the consultation to people in this zone through the project website, by placing adverts in local newspapers and on social media, and by issuing press releases to local media outlets.*
- In addition to these methods, we will write to all Buckinghamshire Council Cabinet members, and the parish councils listed below, to offer them a briefing or invite them to our public events, and support them in promoting the consultation using their existing communication channels.*
- *Marsh Gibbons Parish Council*
 - *Waddesdon Parish Council*
 - *Little Horwood Parish Council*
 - *Great Horwood Parish Council*
 - *Preston Bissett Parish Council*
 - *Woodham Parish Council*

All Phase Two Consultation advertising activity – both the statutory notices and wider advertisement – covered both the inner and outer zone of consultation.

The Applicant wrote to cabinet members of the host authority and the parish councils listed in the SoCC to offer a briefing and share details of the consultation.

For more information, see **Chapter 5** of the **Consultation Report [EN010158/APP/5.1]**.

The targeted consultations were limited to land interests and statutory and non-statutory consultees likely to have an interest in the proposed changes. Due to the limited nature of the proposed changes, it was not considered necessary to include consultees within the outer zone of consultation.

- Swanbourne Parish Council
- Padbury Parish Council

3.5.12 16-17 *At the same time as consulting the local community, we will also consult a range of statutory consultees as set out by Section 42 and Section 48 of the Planning Act 2008 and Regulation 13 of the Infrastructure Planning (Environmental Impact Assessment) Regulations 2017, and additional organisations that we recognise to have an interest in the proposed Rosefield Solar Farm. These groups include:*

- *The host and neighbouring local authorities*
- *Statutory bodies (such as the Environment Agency, Historic England, Natural England and others)*
- *Other community groups and organisations that may have an interest in the proposals (such as Berks, Bucks & Oxon Wildlife Trust, Winslow and Villages Community Board, Buckingham and Village Community Board, Aylesbury & District Group Ramblers and others)*
- *People with an interest in land (e.g. owners or tenants) that may be affected by the proposals.*

The Applicant consulted with all statutory consultees prescribed by the PA 2008 and EIA Regulations. Information about how the Applicant has consulted with statutory consultees under sections 42(1)(a), (b), and (d) of the PA 2008, and other organisations recognised to have an interest in the Proposed Development is included in **Chapter 5 of the Consultation Report [EN010158/APP/5.1]**. A list of section 42(1)(a) and (b) consultees is included in **Appendix E-1: List of prescribed consultees consulted under section 42(1)(a) and (b) during Phase Two Consultation [EN010158/APP/5.2]**. A full list of persons falling within section 44 of the PA 2008 is included within the **Book of Reference [EN010158/APP/4.3]**. A list of non-prescribed consultees and community organisations is available in **Appendix H-1: List of non-prescribed consultees and community organisations consulted during Phase Two Consultation [EN010158/APP/5.2]**.

As part of the additional targeted consultations, the Applicant wrote to prescribed and non-prescribed consultees likely to have an interest in the proposed changes. The organisations consulted are listed in **Appendix K-1: List of prescribed consultees consulted during targeted consultations [EN010158/APP/5.2]**.

3.5.13	17	<i>The proposed DCO application will also be publicised as required by Section 48 of the Planning Act 2008.</i>	<p>As required by section 48 of the PA 2008, the Applicant publicised the Phase Two Consultation in the following newspapers:</p> <ul style="list-style-type: none"> • The Bucks Herald • The Guardian • London Gazette <p>Copies of the newspaper notices are available in Copies of Newspaper Notices [EN010158/APP/1.7]. The section 48 notice was also published on the Rosefield Solar Farm website (see Appendix G-3: Screenshots of Phase Two Consultation website and virtual exhibition [EN010158/APP/5.2]) and included in letters sent to prescribed consultees (see Appendix F-1: Sample letters sent to consultees under s42(1)(a), (b) and (d) and non-prescribed consultees [EN010158/APP/5.2]).</p> <p>Given the nature of the targeted consultations, it was not considered necessary for there to be a further round of section 48 notices.</p>
3.6.2	17	<i>We will present information in a variety of formats and enable feedback to be submitted in a number of ways to encourage participation in the consultation.</i>	<p>Information about the Proposed Development was available in a variety of formats, including:</p> <ul style="list-style-type: none"> • A consultation newsletter: issued to addresses within the inner zone setting out how to find out more about the proposals and participate in the consultation; including information on accessing materials, the locations and timings of the public events, and how people can share their

feedback. This was additionally published on the project website to view and download.

- A consultation booklet: an accessible summary of the proposals for Rosefield Solar Farm, the EIA process, the consultation and planning process, approach to community benefit and next steps. This was available in hard copy at deposit points and the public events, posted on request, and published on the Rosefield Solar Farm website to view and download.
- A 3D model: a virtual model of the proposed Rosefield Solar Farm site was available at the public events.
- A website: the Rosefield Solar Farm project website (www.rosefieldsolarfarm.co.uk) hosted all the consultation documents, including the PEIR, as well as links to the virtual exhibition and online questionnaire. It also included details of the deposit points and public events as well as hosting the project's contact information.
- A virtual exhibition: containing the exhibition banners on display at the public events and a link to the online questionnaire and Rosefield Solar Farm project website.
- Exhibition banners: an accessible summary of the proposals for Rosefield Solar Farm, the EIA process, the consultation and planning process, approach to community benefit and next steps which were displayed at the public events. The exhibition banners were available in the virtual exhibition hosted on the Rosefield Solar Farm project website.

- The Preliminary Environment Information Report (PEIR): containing the initial results of ongoing environmental assessments as well as preliminary information on measures to avoid, prevent, reduce or, if possible, offset any likely significant adverse effects.

All of the consultation materials published as part of Phase Two Consultation are included in **Appendices G-2: Phase Two Consultation materials and advertising, G-3: Screenshots of Phase Two Consultation website and virtual exhibition** and **I-1: Preliminary Environmental Information Report [EN010158/APP/5.2]**.

Feedback could be provided in a number of ways, including:

- Completing an online questionnaire accessed through the Rosefield Solar Farm project website and virtual exhibition.
- Submitting comments or completed questionnaire by email to: info@rosefieldsolarfarm.co.uk
- Posting this questionnaire or submitting comments (no stamp required) to: Rosefield Solar Farm, FREEPOST SEC NEWGATE UK LOCAL

More information can be found in **Chapter 5** of the **Consultation Report [EN010158/APP/5.1]**.

Given the nature of the targeted consultations which included limited changes on the Proposed Development the following information was published:

- A map showing the proposed Order Limits with the extent of the proposed additional land shown in blue.
- A plan comparing the layout of Parcel 3 presented at Phase Two Consultation and the updated layout subject to the targeted consultation.
- An Addendum to the PEIR

For more information, see **Chapter 7** of the **Consultation Report [EN010158/APP/5.1]**.

3.6.3	17	<i>Should we carry out any further phases of consultation prior to submission of the DCO application, including, if necessary, in response to substantial changes to the project or its effects, our approach to consultation will be informed by the new National Infrastructure Planning Guidance published on 30 April 2024. We will use some, but not necessarily all, of the means of consultation set out in this document and will work with Buckinghamshire Council to assist us in deciding the most appropriate activities for any further phases of consultation.</i>	The Applicant presented its approach to carrying out its additional targeted consultations with the host authority and agreed its approach. The Applicant incorporated feedback from the host authority into its approach. This included, for example, extending the consultation period to eight weeks. For more information, see Chapter 7 of the Consultation Report [EN010158/APP/5.1] .
3.6.4	17	<i>Following the statutory consultation period, we will continue to provide updates about Rosefield on our website and to statutory consultees as appropriate.</i>	The Applicant has continued to update its website where project updates are available. For example, a copy of the Community Update newsletter was published on the Rosefield Solar Farm website on 21 May 2025 to provide an update on

the design of the Proposed Development and timeline to submission of the Application.

The Applicant has additionally continued to hold meetings with stakeholders, including statutory consultees such as Natural England, the host authority and the Environment Agency to provide updates on the Proposed Development.

For more information about how the Applicant engaged with the local community and stakeholders outside of formal phases of consultation, see **Chapter 3** of the **Consultation Report [EN010158/APP/5.1]**.

- 3.6.5 17-18 *Information about our proposals will be published for consultation in the following formats:*
- *A consultation newsletter: a newsletter issued to addresses within the inner zone setting out how to find out more about the proposals and participate in the consultation; including information on accessing materials, the locations and timings of the public events, and how people can share their feedback. This will additionally be published on the project website to view and download.*
 - *A consultation booklet: an accessible summary of our proposals for Rosefield, the EIA process, the consultation and planning process, approach to community*

The documents listed were published as part of Phase Two Consultation (see **Chapter 5** of the **Consultation Report [EN010158/APP/5.1]** for further details). All of the consultation materials published as part of Phase Two Consultation are included in **Appendices G-2: Phase Two Consultation materials and advertising, G-3: Screenshots of Phase Two Consultation website and virtual exhibition** and **I-1: Preliminary Environmental Information Report [EN010158/APP/5.2]**.

The Applicant published consultation materials as part of its additional targeted consultation activity, which are described in **Chapter 7** of the **Consultation Report [EN010158/APP/5.1]**. All of the consultation materials published as part of the additional targeted consultations are included in **Appendix K-2: Materials for targeted consultation on proposed additional land and proposed layout changes** and **K-4: Screenshots of updates to Rosefield Solar Farm project**

benefit and next steps. This will be available in hard copy at deposit points and the public events, mailed on request and published on the project website to view and download.

- *A questionnaire: the main way we will collect feedback from the community. The questions will be easy to understand and the responses will be considered as we refine our plans. This will be available in hard copy at deposit points and the public events, posted on request and published on the project website to view and download.*
- *A 3D model: a virtual model of the proposed Rosefield site will be available to view at the public events.*
- *A website: the project website (www.rosefieldsolarfarm.co.uk) will host all of the consultation documents, including the PEIR, as well as links to a virtual exhibition and online questionnaire. It will also include details of the deposit points and public events as well as hosting contact information for people to get in touch with the team.*
- *A virtual exhibition: containing the exhibition banners on display at the public*

website at targeted consultation and blog post [EN010158/APP/5.2].

events and a link to the online questionnaire and project website. It will host contact information for people to get in touch with the team.

- *Exhibition banners: an accessible summary of our proposals for Rosefield, the EIA process, the consultation and planning process, approach to community benefit and next steps which will be displayed at the public events. The exhibition banners will also be available in the virtual exhibition.*
- *The Preliminary Environment Information Report (PEIR): containing the initial results of our ongoing environmental assessments as well as preliminary information on measures to avoid, prevent, reduce or, if possible, offset any likely significant adverse effects.*

3.6.6 18 *Printed copies of the SoCC and consultation documents – including the PEIR – will be available in local libraries and community venues ('deposit points') close to the proposed site for Rosefield and maintained throughout the consultation period (see Table 2 below). USBs containing all of these*

Printed copies of the SoCC were available at deposit points from 04 September 2024. The SoCC was published on the Rosefield Solar Farm project website from 04 September 2024.

The SoCC was updated with a clarification note on its front page at the deposit points on 10 October 2024 due to the inclusion of the word 'draft' on the title page of the final SoCC in error.

documents will also be available to take away.

All consultation materials – including the PEIR – were available from deposit points from 18 September 2024, as well as USBs containing all of the documents for people to take away. Regular checks of the deposits were undertaken to ensure there was always stock available. Additional information published on 07 November 2024 was available at the deposit points from this date.

More information about the deposit points can be found in **Chapter 5** of the **Consultation Report [EN010158/APP/5.1]**, including an example image clearly showing the materials available at Winslow Community Library.

Given the nature of the targeted consultations, it was not considered necessary for documents to be deposited at the deposit points.

3.6.6 18 *All materials will be published on the project website (www.rosefieldsolarfarm.co.uk).*

Consultation documents were available on the Rosefield Solar Farm project website (www.rosefieldsolarfarm.co.uk) at the start of Phase Two Consultation on 18 September 2024. Additional information published on 07 November 2024 was available on the website from this date. Screenshots of the Rosefield Solar Farm project website during Phase Two Consultation are available at **Appendix G-3: Screenshots of Phase Two Consultation website and virtual exhibition [EN010158/APP/5.2]**.

As part of the targeted consultations, a blog post was posted on the Rosefield Solar Farm project website on 21 May 2025 which described the nature of each of the proposed changes and contained links to the plans published for both targeted

consultations. A PEIR Addendum published as part of the targeted consultation on the proposed layout changes was published on the Rosefield Solar Farm website on 21 May 2025. This was updated on 02 June 2025. A screenshot of the relevant Rosefield Solar Farm project website pages can be found in **Appendix K-4: Screenshots of updates to Rosefield Solar Farm project website at targeted consultation and blog post [EN010158/APP/5.2]**.

3.6.7 18 *Deposit points have been selected to ensure they are within or near the inner zone, are accessible and have opening times to accommodate people with different time commitments.*

Location	Opening hours
East and Botolph Claydon Village Hall Botyl Road, Botolph Claydon MK18 2LR	Sunday to Thursday 8am – 11pm Friday and Saturday 8am – 12am
Winslow Community Library Park Rd, Winslow MK18 3DN	Monday 9.30am – 5pm Wednesday 9.30am – 1pm Friday 1 – 5pm Saturday 9.30am – 1pm

The Applicant stocked the identified deposit points with copies of the SoCC from 04 September 2024, and all consultation materials – including the PEIR – from 18 September 2024. There were also USBs containing all of the documents for people to take away. Regular checks of the deposits were undertaken to ensure there was always stock available.

More information about the deposit points can be found in **Chapter 5** of the **Consultation Report [EN010158/APP/5.1]**, including an example image clearly showing the materials available at Winslow Community Library.

3.6.8	18	<i>The locations of the deposit points will be publicised in our consultation material, including the newsletter, consultation booklet and on the project website.</i>	The locations of the deposit points were publicised in the consultation newsletter, consultation booklet and on the Rosefield Solar Farm project website. Copies of the Phase Two Consultation materials are available in Appendix G-2: Phase Two Consultation materials and advertising [EN010158/APP/5.2] . Screenshots of the Phase Two Consultation website at Phase Two Consultation are available at Appendix G-3: Screenshots of Phase Two Consultation website and virtual exhibition [EN010158/APP/5.2] . For more information, please see Chapter 5 of the Consultation Report [EN010158/APP/5.1] .
3.6.9	18	<i>We will provide hard copies of the consultation booklet, questionnaire and SoCC free of charge on request – as well as USBs containing all of the consultation materials (including the PEIR). We will review requests for hard copies of the PEIR on a case-by-case basis.</i>	For Phase Two Consultation, printed copies of the consultation booklet, questionnaire and SoCC were available free of charge and could be requested via the Freephone number or email, or via the deposit points. Two copies of the SoCC were sent to members of the public. The Applicant received one request for a hard copy of the chapters and appendices relevant to biodiversity of the PEIR from members of the Butterfly Conservation Trust, which was fulfilled free of charge. In addition, one copy of the Non-Technical Summary was issued to a member of the public and a copy of Figure 18.1 from the PEIR was issued to an elected representative following the public event – both of which were fulfilled free of charge. USBs containing all of the consultation documents – including the PEIR – were available free of charge. Four copies of the consultation booklet, questionnaire and USBs were sent to consultees on request during the consultation period.

During the targeted consultations, printed copies of the plans were provided to all land interests and relevant prescribed consultees. Hard copies of the PEIR Addendum – as well as the materials from Phase Two Consultation - were available on request.

3.6.10	19	<i>Requests for consultation information in alternative formats (e.g. in different languages, large print or easy access) will be considered on a case-by-case basis so we can establish how best to provide the information required.</i>	The Applicant did not receive any requests for the information to be presented in alternative formats during Phase Two Consultation.
3.6.11	19	<i>From the start of consultation, the project website (www.rosefieldsolarfarm.co.uk) will host all of the consultation documents, including the PEIR, as well as links to the virtual exhibition and online questionnaire. It will also include details of the deposit points and public events as well as hosting contact information for people to get in touch with the team</i>	<p>The consultation documents and links to the virtual exhibition and online questionnaire were available on the Rosefield Solar Farm project website www.rosefieldsolarfarm.co.uk from the start of the consultation period on 18 September 2024. It included details of the public events and deposit points, and hosted contact information to enable people to get in touch with the team to find out more about the Proposed Development or request hard copy documents or USBs. Screenshots of the Rosefield Solar Farm project website during Phase Two Consultation are available at Appendix G-3: Screenshots of Phase Two Consultation website and virtual exhibition [EN010158/APP/5.2].</p> <p>Given the limited nature of the targeted consultations, a blog post was posted on the Rosefield Solar Farm project website on 21 May 2025 which described the nature of each of the proposed changes and contained links to the plans published</p>

for both targeted consultations. A PEIR Addendum published as part of the targeted consultation on the proposed layout changes was published on the Rosefield Solar Farm website on 21 May 2025. This was updated on 02 June 2025. See **Appendix K-4: Screenshots of updates to Rosefield Solar Farm project website at targeted consultation and blog post [EN010158/APP/5.2]**.

3.6.12 19 *The interactive virtual exhibition will be accessed through the website and will provide an alternative format for people to learn about the proposals. It will include information boards which will be on display at the public events, links to documents and the online questionnaire.*

A virtual exhibition was available online during Phase Two Consultation, which displayed the exhibition boards available at the in-person public events and included links to documents and the online questionnaire. It also included a portal showing 3D visualisations of the Proposed Development from key locations around the proposed Site boundary. For screenshots of the virtual exhibition, see **Appendix G-3: Screenshots of Phase Two Consultation website and virtual exhibition [EN010158/APP/5.2]**. The virtual exhibition was accessed by 56 unique users through the consultation period.

Given the nature of the targeted consultations, which involved limited changes to the Proposed Development as presented at Phase Two Consultation, a virtual exhibition was not employed as a consultation method. The approach to targeted consultation was agreed with the host authority.

3.6.13 19 *We will hold in-person public events during the consultation period to enable anyone with an interest in the proposals to find out more about them and ask questions to members of the team. Printed copies of the consultation*

A total of five public events were held during the consultation period. Public events were staffed by members of the project team, with printed copies of the consultation booklet, SoCC and questionnaire available at the events for members of the public to take away.

booklet, SoCC and questionnaire will be available at these events for members of the public to take away. Completed questionnaires will be able to be returned at the events.

Information about the Proposed Development was presented on exhibition boards, as well as a 3D model which enabled attendees to view indicative 3D visualisations of the Proposed Development from different locations around the proposed Site boundary. See **Chapter 5 of the Consultation Report [EN010158/APP/5.1]** for more information about the public events.

Given the nature of the targeted consultation, which involved limited changes to the Proposed Development as presented at Phase Two Consultation, public events were not employed as a consultation method. The approach to targeted consultation was agreed with the host authority.

3.6.14 20 *The events are being held in accessible venues around the proposed Rosefield site and have been organised at a range of dates and times to ensure that people with different schedules are able to attend. This includes events after normal working hours and on the weekend.*

The public events took place at the below times, dates and locations. All venues were chosen due to their proximity to the proposed Site boundary and in line with accessibility requirements to ensure that anyone with an interest in the proposals could attend. The Applicant welcomed 237 people over the five events.

Locations	Date
Calvert Green Village Hall and Brickworx Bar Cotswolds Way, Calvert MK18 2FJ	Thursday 3 October 2024 2pm-6pm

		East and Botolph Claydon Village Hall Botyl Road, Botolph Claydon MK18 2LR	Friday 4 October 2024 4pm-8pm
		Quainton Memorial Hall Station Rd, Quainton, Aylesbury HP22 4BW	Saturday 5 October 2024 10am-2pm
		Steeple Claydon Village Hall 48 Queen Catherine Rd, Steeple Claydon MK18 2PY	Friday 18 October 2024 3.30pm-8pm
		Quainton Memorial Hall Station Rd, Quainton, Aylesbury HP22 4BW	Saturday 19 October 2024 10am-2pm

3.6.15	20	<i>Details about the dates and times of the public events will be published on the project website, in the consultation newsletter and booklet. The schedule will also be included in supporting publicity such as newspaper and social media adverts.</i>	<p>Details about the dates and times of the public events were published on the Rosefield Solar Farm project website, consultation booklet and within the consultation newsletter which was sent to all addresses within the inner zone (2,993 addresses) on 04 September 2024. They were also included in supporting press releases, newspaper and social media adverts.</p> <p>Copies of the consultation materials and screenshots of the Rosefield Solar Farm project website can be found in Appendix G-2: Phase Two Consultation materials and advertising and G-3: Screenshots of Phase Two Consultation website and virtual exhibition [EN010158/APP/5.2].</p>
--------	----	--	--

3.6.15	20	<i>We will consider requests for additional events throughout the consultation period on a case-by-case basis. Any further events would be publicised on the project website, using social media adverts and, if possible, at the venue.</i>	<p>A total of five public events were held during the consultation period. The Applicant did not receive any requests for additional events as part of its Phase Two Consultation.</p> <p>Facebook advertising included the times, dates and locations of the public events. More detail is included in Chapter 5 of the Consultation Report [EN010158/APP/5.1]. Sample adverts, social media posts and the start of consultation press release can be found in Appendix G-2.7 of the Consultation Report [EN010158/APP/5.2].</p>						
3.6.16	20	<i>In the unlikely event that there are changes to the locations or times of our events, we will publicise this information on our website.</i>	<p>Public events were carried out at the time, date and locations set out in Table 3 of the SoCC. More detail about the public events can be found in Chapter 5 of the of the Consultation Report [EN010158/APP/5.1].</p>						
Table 3	20	<table><tr><th>Public event location</th><th>Date and time</th></tr><tr><td>Calvert Green Village Hall and Brickworx Bar Cotswolds Way, Calvert MK18 2FJ</td><td><i>Thursday 3 October 2pm-6pm</i></td></tr><tr><td>East and Botolph Claydon Village Hall Botyl Road, Botolph Claydon MK18 2LR</td><td><i>Friday 4 October 4pm-8pm</i></td></tr></table>	Public event location	Date and time	Calvert Green Village Hall and Brickworx Bar Cotswolds Way, Calvert MK18 2FJ	<i>Thursday 3 October 2pm-6pm</i>	East and Botolph Claydon Village Hall Botyl Road, Botolph Claydon MK18 2LR	<i>Friday 4 October 4pm-8pm</i>	<p>The public events took place at the times, dates and locations set out in Table 3 of the SoCC. All venues were chosen due to their proximity to the proposed Site boundary and in line with accessibility requirements to ensure that anyone with an interest in the proposals could attend. The Applicant welcomed 237 people over the five events.</p>
Public event location	Date and time								
Calvert Green Village Hall and Brickworx Bar Cotswolds Way, Calvert MK18 2FJ	<i>Thursday 3 October 2pm-6pm</i>								
East and Botolph Claydon Village Hall Botyl Road, Botolph Claydon MK18 2LR	<i>Friday 4 October 4pm-8pm</i>								

		Quainton Memorial Hall Station Rd, Quainton, Aylesbury HP22 4BW	Saturday 5 October 10am-2pm	
		Steeple Claydon Village Hall 48 Queen Catherine Rd, Steeple Claydon MK18 2PY	Friday 18 October 3.30pm-8pm	
		Quainton Memorial Hall Station Rd, Quainton, Aylesbury HP22 4BW	Saturday 19 October 10am-2pm	
3.6.17	20	<i>We welcome reasonable requests for presentations and briefings from stakeholder groups, for example: local authorities, parish councils, and local community groups, during the consultation period.</i>		
		<p>The Applicant accommodated all requests for presentations, briefings, meetings and site visits during Phase Two Consultation. More information about activity carried out during the consultation can be found in Chapter 5 of the Consultation Report [EN010158/APP/5.1].</p> <p>The Applicant accommodated all requests for presentations, briefings, meetings and site visits as part of its targeted consultations. More information about activity carried out during the consultation period can be found in Chapter 7 of the Consultation Report [EN010158/APP/5.1].</p>		

3.6.19	21	<i>Other activities will be carried out, if considered necessary and appropriate, to engage specific interests or seldom heard groups (see section 3.6.31-3.6.32). This could include, for example, further meetings with residents who are closest to the proposed site.</i>	The Applicant accommodated all requests for presentations, briefings, meetings and site visits during Phase Two Consultation. More information about activity carried out during the consultation can be found in Chapter 5 of the Consultation Report [EN010158/APP/5.1] .
3.6.20	21	<i>Details of all our consultation activity will be included in a Consultation Report which we will submit as part of our DCO application.</i>	A Consultation Report [EN010158/APP/5.1] and its related Appendices [EN010158/APP/5.2] form part of the DCO Application and set out how pre-application consultation (both statutory and non-statutory) was undertaken in the development of the Proposed Development.
3.6.21	21	<i>We will publicise the consultation and associated activities in local media ahead of the start of the consultation period and will update local broadcast and print media channels on our activity during the consultation.</i>	<p>As required by section 48 of the PA 2008, the Applicant publicised the Phase Two Consultation in the following newspapers:</p> <ul style="list-style-type: none"> • Bucks Herald • The Guardian • London Gazette <p>Copies of the newspaper notices are available in Copies of Newspaper Notices [EN010158/APP/1.7]. The section 48 notice was also published on the Rosefield Solar Farm project website (see Appendix G-3: Screenshots of Rosefield Solar Farm website and virtual exhibition [EN010158/APP/5.2]) and included in letters sent to prescribed consultees (see Appendix F-1: Sample letters sent to consultees under</p>

s42(1)(a), (b) and (d) and non-prescribed consultees [EN010158/APP/5.2].

The Applicant additionally sought to raise awareness of the consultation amongst the local communities using the following techniques:

- Issuing press releases to attract media coverage and raise awareness of the consultation at publication of SoCC on 04 September 2024 and at the start of consultation on 18 September 2024.
- Promotion of the consultation on the Rosefield Solar Farm website to the end of the consultation period.
- Advertising in print and digital versions of the Bucks Free Press and Bucks Herald from 11 September 2024.
- Advertising on Facebook and LinkedIn social media channels.

Sample adverts, social media posts and the start of consultation press release can be found in **Appendix G-2.7** of the **Consultation Report [EN010158/APP/5.2]**.

The targeted consultations were limited to land interests and statutory consultees likely to have an interest in the changes to Proposed Development and therefore advertising (both statutory and non-statutory) was not considered necessary. A post setting out information about the targeted consultations was published on the Rosefield Solar Farm project website on 21 May 2025. A screenshot of the page is provided at **Appendix K-4: Screenshots of updates to Rosefield Solar**

			Farm project website at targeted consultation and blog post [EN010158/APP/5.2].
3.6.22	21	<i>Where publication timings allow, we will seek to use local newsletters to further engage with local communities.</i>	While the Applicant did not insert advertisements within any local newsletters, The Claydons Magazine included information about the consultation in its September 2024, October 2024 and November 2024 issues.
3.6.23	21	<i>Statutory notices will be published in line with Section 47 and Section 48 of the Planning Act.</i>	<p>As required by section 47 of the PA 2008, the Applicant publicised the availability of the SoCC in the Winslow Advertiser and Bucks Herald on 04 September 2024 (see Appendix D-2: Section 47 [EN010158/APP/5.2]).</p> <p>As required by section 48 of the PA 2008, the Applicant publicised the Phase Two Consultation in the following newspapers:</p> <ul style="list-style-type: none"> • Bucks Herald • The Guardian • London Gazette <p>Copies of the newspaper notices are available in Copies of Newspaper Notices [EN010158/APP/1.7]. The section 48 notice was also published on the Rosefield Solar Farm project website (see Appendix G-3: Screenshots of Rosefield Solar Farm website and virtual exhibition [EN010158/APP/5.2]) and included in letters sent to prescribed consultees (see Appendix F-1: Sample letters sent to consultees under s42(1)(a), (b) and (d) and non-prescribed consultees [EN010158/APP/5.2]).</p>

			Given the nature of the targeted consultation, which included limited changes to the Proposed Development, it was not considered necessary for there to be a further round of section 48 notices.
3.6.24	21	<i>We will use Meta social media advertising to help publicise the consultation and encourage those with an interest in our proposals to get involved.</i>	<p>The Applicant used Facebook to promote its consultation activity. The Applicant targeted users living within 20 kilometres of the proposed Site boundary between 11 September 2024 and 05 December 2024, reaching 84,627 users, with 52 users interacting with the adverts and clicking through to the Rosefield Solar Farm website. More detail is included in Chapter 5 of the Consultation Report [EN010158/APP/5.2]. Sample social media posts can be found in Appendix G-2.7 of the Consultation Report [EN010158/APP/5.2].</p> <p>Given the limited nature of the targeted consultations, it was not considered necessary for there to be advertisements publicising the consultation on social media.</p>
3.6.24	21	<i>We would also publicise the consultation by publishing content on EDF Renewable's company LinkedIn page.</i>	On 04 September 2024 and 18 September 2024, details of the consultation were published on EDF Renewables UK & Ireland's LinkedIn page (c. 93,000 followers) which received 13,433 impressions. Sample social media posts can be found in Appendix G-2.7 of the Consultation Report [EN010158/APP/5.2] .
3.6.25	21	<i>To find out more information or request copies of the consultation materials, anyone can contact the consultation team by freephone (0800 861 1097) during normal</i>	The Applicant maintained a freephone line (0800 861 1097) throughout both Phase Two Consultation and its targeted consultation. It was available during normal business hours

business hours (Monday to Friday, 9am to 5:30pm). Outside of these hours, callers will be able to leave a message requesting a callback.

(Monday to Friday 9am to 5:30pm). Outside of these hours, callers could leave a message requesting a callback.

3.6.26	21	<i>Alternatively, people can email info@rosefieldsolarfarm.co.uk or write to the team via Freepost (no stamp required): Rosefield Solar Farm, FREEPOST SEC Newgate UK LOCAL.</i>	The email account was maintained and monitored throughout both consultation periods.
3.6.27	22	<i>We will produce a questionnaire inviting feedback on different elements of the proposed Rosefield. The questionnaire will be available to complete on the project website: www.rosefieldsolarfarm.co.uk, in printed form at public events, at deposit points around the local area and on request using the project contact details.</i>	A consultation questionnaire was published as part of the consultation materials produced for Phase Two Consultation and was available to view and download online, in hard copy at the public events, at the deposit points and on request using the project contact details. A copy of the consultation questionnaire is available at Appendix G-2: Phase Two Consultation materials and advertising [EN010158/APP/5.2] . Given the limited nature of the proposed changes subject to targeted consultation the Applicant did not produce a consultation questionnaire for either targeted consultation.
3.6.28	22	<i>The completed hard-copy questionnaire can be returned using the Freepost address set out in this document during the consultation period, or at the public events.</i>	Hard-copy questionnaires were accepted using the Freepost address at the public events. One hard copy questionnaire was returned at the public events, and one was returned through the Freepost address.
3.6.29	22	<i>Respondents will also be able to complete the questionnaire online, which will be made</i>	An online version of the consultation questionnaire could be filled on online, with the link available on the Rosefield Solar

available through the project website: www.rosefieldsolarfarm.co.uk as well as the virtual exhibition.

Farm project website and virtual exhibition and publicised on the consultation materials. The Applicant received 18 submissions using the online questionnaire by the end of the consultation period.

3.6.30	22	<i>Alternatively, respondents can write to us via email or Freepost using the details set out in this document. All written feedback will be accepted.</i>	The Applicant received 159 emails containing a consultation response by the end of the consultation period. The Applicant did not receive any written feedback through the Freepost address by the end of the consultation period.
3.6.31	22	<i>It is important to ensure that everyone with an interest in the proposals has the opportunity to comment on our proposals as part of the consultation. We want our consultation to be inclusive and gather feedback from a wide range of audiences, including those who are seldom heard in public consultations such as people without internet access, seasonal workers, younger people and socially isolated people.</i>	<p>The key outcomes of Phase Two Consultation highlight its success in ensuring that everyone with an interest in the Proposed Development had the opportunity to comment on them:</p> <ul style="list-style-type: none"> • 179 responses received • 2,993 newsletters sent to local homes and businesses • 237 people visited a public event • 1,598 unique visitors to the Rosefield Solar Farm project website and 56 people visiting the virtual exhibition during the consultation period. • 84,627 users reached through Facebook advertising, with LinkedIn posts gaining 13,433 impressions. • Digital and print advertising campaign in local publications with a combined print circulation of over 6,000. • Coverage advertising the consultation in Bucks Herald, BBC Beds, Herts & Bucks, Bucks Free Press and Bucks Radio.

The Applicant designed its consultation programme to ensure it was inclusive and accessible to people seldom heard in consultation activity, including:

- Writing to the host authority and organisations representing seldom heard individuals and groups to ensure our consultation activity and materials are appropriate and remove barriers to engagement.
- Choosing accessible venues for deposit points and public events.
- Publicising the consultation in digital editions of local newspapers and on social media.
- Holding public events at a variety of times, including evenings and weekends to enable participation by people with different time commitments.
- Making provision for people without internet access through the consultation programme. This included sending a consultation newsletter to every address within the inner zone, holding public events in the area, publicising the consultation in print editions of local newspapers and making hard copies of consultation materials available on request and at deposit points.
- Providing materials in alternative formats on request (e.g. different languages, large-print or easy read). Contact details to request materials in alternative formats were published on the Rosefield Solar Farm project website, in the consultation booklet and newsletter.

- Writing to 59 organisations representing seldom heard individuals and groups in both the inner and outer zone at the start of consultation to support them in promoting the consultation through their own existing communication channels, such as social media feeds.
- Contacting community and voluntary organisations including parish councils and schools within the inner zone to offer direct engagement.
- Providing a variety of communication channels including a freephone number, email address and Freepost for those seeking further information.

More information about how the Applicant conducted its Phase Two Consultation is provided in **Chapter 5 of the Consultation Report [EN010158/APP/5.1]**.

3.6.31 22 *Writing to the local authority and organisations representing seldom heard individuals and groups directly.*

The Applicant consulted the host authority on the contents of the SoCC, including how it would engage seldom heard individuals and groups. The Applicant wrote to 59 community and voluntary organisations and 11 education providers within the inner and outer zone on 18 September 2024 inviting them to comment on the proposals, attend a public event and offered a briefing on the proposals. It also included a graphic which could be used to promote the consultation on their existing communication channels. A list of organisations contacted by the Applicant is available at **Appendix H-1: List of non-prescribed consultees and community organisations consulted during Phase Two Consultation [EN010158/APP/5.2]**.

			Given the nature of the targeted consultations, which included minor changes to the Proposed Development, it was not considered necessary to notify community and voluntary groups about the targeted consultations.
3.6.31	22	<i>Choosing accessible venues for deposit points and public events.</i>	All venues chosen by the Applicant were screened to ensure they were accessible. The Applicant did not receive any feedback indicating that anyone was unable to access the public events because of accessibility requirements.
3.6.31	22	<i>Publicising the consultation in digital and print editions of local newspapers.</i>	<p>The Applicant ran a digital advertising campaign to promote the consultation. Along with digital advertising in editions of the Bucks Herald and Bucks Free Press, the Applicant additionally used Facebook and LinkedIn to promote its consultation activity. On 04 September 2024 and 18 September 2024, details of the consultation were published on EDF Renewables UK & Ireland's LinkedIn page (c. 93,000 followers) which received 13,433 impressions.</p> <p>Facebook adverts ran from 11 September 2024 and were targeted geographically to raise local awareness. The Applicant targeted users living within 20 kilometres of the proposed Site boundary between 11 September 2024 and 05 December 2024, reaching 84,627 users. More detail is included in Chapter 5 of the Consultation Report [EN010158/APP/5.1]. Sample adverts, social media posts and the start of consultation press release can be found in Appendix G-2.7 of the Consultation Report [EN010158/APP/5.2].</p>

			<p>Given the nature of the targeted consultations, which included minor changes to the Proposed Development, it was not considered necessary for there to be advertisements publicising the consultations on social media or in local newspapers.</p>
		<p><i>Publicising the consultation using Meta social media advertising to help reach young people.</i></p>	<p>Facebook adverts ran from 11 September 2024 and were targeted geographically to raise local awareness. The Applicant targeted users living within 20 kilometres of the proposed Site boundary between 11 September 2024 and 05 December 2024, reaching 84,627 users. Sample social media posts can be found in Appendix G-2.7 of the Consultation Report [EN010158/APP/5.2].</p>
3.6.31	22	<p><i>Holding public events at a variety of times, including evenings and weekends to enable participation by people with different time commitments.</i></p>	<p>The Applicant held public events at a variety of times, including evenings, and dates, including weekends, to accommodate people with different time commitments. The Applicant welcomed 237 people to the five events it held over the consultation period. Details of the public events are included in Chapter 5 of the Consultation Report [EN010158/APP/5.1].</p> <p>Given the nature of the targeted consultations, which included minor changes to the Proposed Development, it was not considered necessary to hold public events.</p>
3.6.31	22	<p><i>Making provision for people without internet access through the consultation programme. This includes sending a consultation newsletter to every address within the inner zone, holding public events in the area, publicising the consultation in print editions of</i></p>	<p>The Applicant sent a letter publicising the availability of the SoCC and details of Phase Two Consultation, including the timings of the public events, to all addresses (c. 2,993) within the inner zone on 04 September 2024. This also included</p>

local newspapers and making hard copies of consultation materials available on-request and at deposit points.

details of the deposit points where people could find copies of the consultation materials.

As required by section 48 of the PA 2008, the Applicant publicised the Phase Two Consultation in the following newspapers:

- Bucks Herald
- The Guardian
- London Gazette

Copies of the newspaper notices are available in **Copies of Newspaper Notices [EN010158/APP/1.7]**. The section 48 notice was included in letters sent to prescribed consultees (see **Appendix F-1: Sample letters sent to consultees under s42(1)(a), (b) and (d) and non-prescribed consultees [EN010158/APP/5.2]**).

This was supplemented by issuing press releases to attract media coverage at the launch of consultation and start of consultation on 04 September 2024 and 18 September 2024, as well as advertising in print versions of the Bucks Herald and Bucks Free Press. Sample adverts and the start of consultation press release can be found in **Appendix G-2.7 of the Consultation Report [EN010158/APP/5.2]**.

The targeted consultations were limited to land interests and statutory consultees likely to have an interest in the changes to Proposed Development and therefore advertising (both statutory and non-statutory) was not considered necessary. However, concurrently with the start of the consultation period,

the Applicant sent a Community Update newsletter to all addresses (c. 2,993) within the inner zone of consultation (defined at Phase Two Consultation) on 21 May 2025. This included information about the changes which were subject to targeted consultation. A copy of the Community Update newsletter is available at **Appendix B-1: Summary of community engagement undertaken outside of formal consultation [EN010158/APP/5.2]**.

3.6.32	23	<i>Requests for consultation information in alternative formats (e.g. in different languages, large print or easy access) will be considered on a case-by-case basis so we can establish how best to provide the information required.</i>	The Applicant did not receive any requests for materials to be provided in alternative formats within either consultation period.
4.1.1	24	<p><i>Anyone can find out more by:</i></p> <ul style="list-style-type: none"> <i>• Contacting us on 0800 861 1097 or info@rosefieldsolarfarm.co.uk or by writing to the Freepost address (Rosefield Solar Farm, FREEPOST SEC Newgate UK LOCAL).</i> <i>• Attending a public event which we will hold in locations around the proposed Rosefield site.</i> <i>• Viewing the virtual exhibition on our website: www.rosefieldsolarfarm.co.uk</i> 	<p>The Applicant maintained project contact details through both stages of consultation, including a freephone (0800 861 1097), email address and Freepost (Rosefield Solar Farm, SEC Newgate UK LOCAL).</p> <p>The Applicant also held five public events throughout the consultation period and welcomed 237 attendees over the public events.</p> <p>The Applicant maintained a Rosefield Solar Farm project website which included all of the consultation materials which could be viewed and downloaded, and a link to the virtual exhibition. There were 1,598 unique click throughs to the Rosefield Solar Farm website within the consultation period.</p>

- *Reading the consultation booklet which will be available online or in hard copy on request, at deposit points around the area and at the public events.*
- *Reviewing the PEIR by going to www.rosefieldsolarfarm.co.uk or visiting a deposit point.*

The virtual exhibition was accessed by 56 unique users through the consultation period.

Copies of the consultation documents were also available to view and take away at the deposit points which were maintained throughout the consultation period, as well as at the public events.

4.2.1	24	<p><i>We welcome feedback on our proposals for Rosefield. Anyone can share their views by:</i></p> <ul style="list-style-type: none"> • <i>Completing the consultation questionnaire online at www.rosefieldsolarfarm.co.uk.</i> • <i>Returning a questionnaire by Freepost (no stamp required) to the following address: Rosefield Solar Farm, FREEPOST SEC Newgate UK LOCAL.</i> • <i>Returning a questionnaire by email: info@rosefieldsolarfarm.co.uk.</i> • <i>Submitting comments by email to info@rosefieldsolarfarm.co.uk or in writing to the above Freepost address.</i> 	<p>Responses to the consultation could be submitted using any of these options during Phase Two Consultation. All consultation materials listed the methods which people could use to respond to the consultation.</p> <p>The Applicant invited comments on the targeted consultation in writing by email and Freepost, and did not produce a consultation questionnaire due to the limited nature of the proposed changes.</p>
4.2.2	24	<p><i>Responses must be received by the consultation deadline of 11:59pm on 14 November 2024.</i></p>	<p>During the Phase Two Consultation, the Applicant extended the consultation period to 11:59pm on 05 December 2024. The Applicant accepted all feedback that was received by the Phase Two Consultation deadline of 23:59 on 05 December</p>

2024. The Applicant also continued to accept any responses that were delivered after this date.

4.2.3	24	<i>Responses must be individual. Petitions will be treated as a single response for the purpose of the Consultation Report.</i>	The Applicant did not receive any petitions in response to either consultation period.
4.3.1	25	<i>Following this consultation, we will consider all of the feedback we receive as we continue refining our proposals for Rosefield before submitting a DCO application. The DCO application will include a Consultation Report, which will set out how we have consulted, summarise the responses received and explain how we have had regard to them</i>	<p>The Applicant has carefully considered all feedback received to Phase Two Consultation, as explained in Chapters 5 and 6 of the Consultation Report [EN010158/APP/5.1].</p> <p>The Applicant has responded to feedback received to Phase Two Consultation in Appendices J-1: Summary of Section 42(1)(a)(b) and (d) responses to Phase Two Consultation and consideration by topic and J-2: Summary of Section 47 responses to Phase Two Consultation and consideration by topic [EN010158/APP/5.2].</p> <p>The Applicant has carefully considered all feedback received to its targeted consultation, as explained in Chapter 7 of the Consultation Report [EN010158/APP/5.1]. The Applicant has responded to feedback received to each targeted consultation in Appendix K-3: Summary of responses to targeted consultations and consideration by topic [EN010158/APP/5.2].</p>



rosefieldsolarfarm.co.uk